

Advanced Materials

High Performance Components

North America

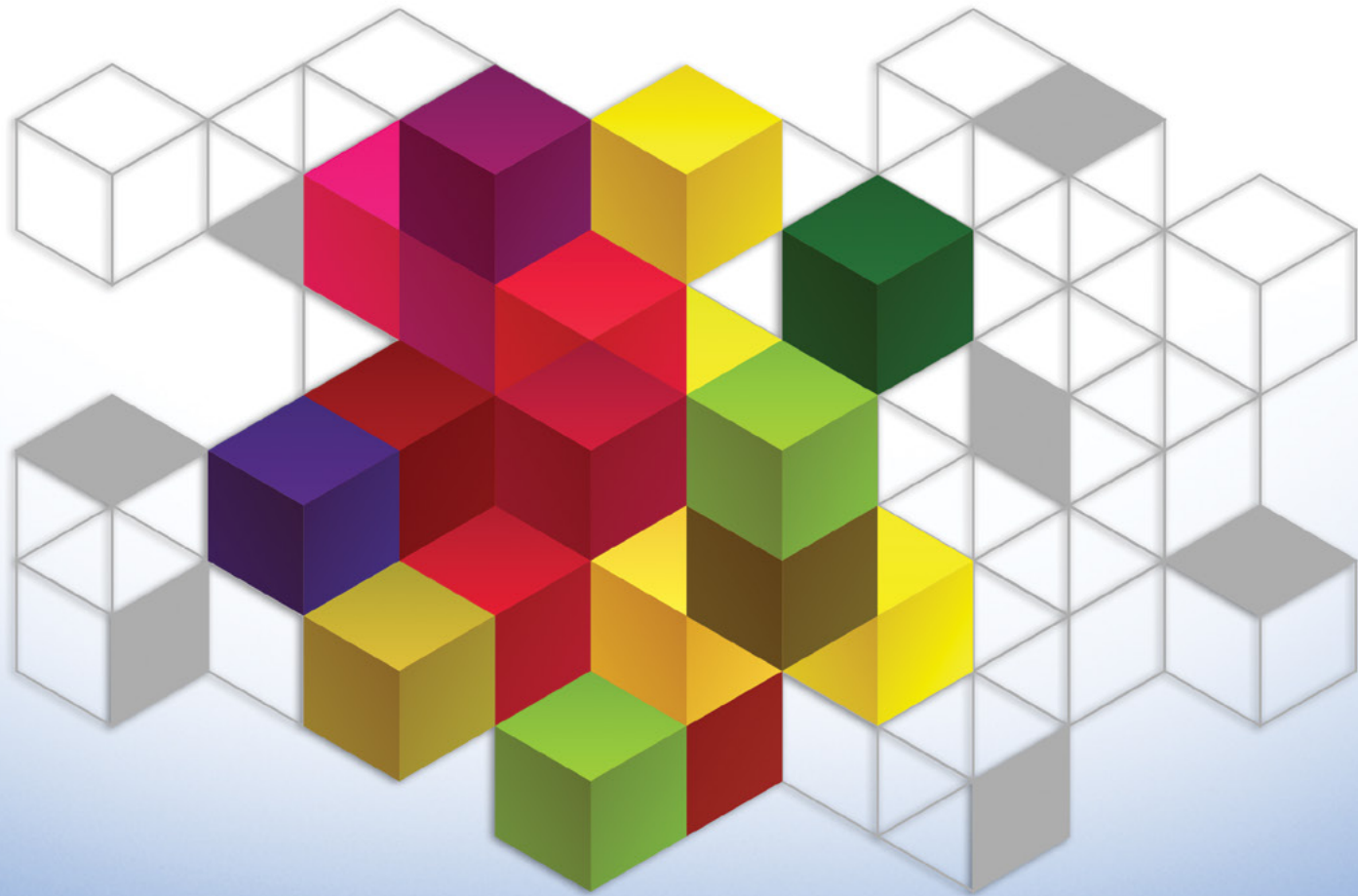


Table of Contents

Introduction	1
1.0 Bisphenol-A Based Epoxy Resins	2-6
1.1 Unmodified Liquid Epoxy Resins	2
1.2 Modified Liquid Epoxy Resins	2-3
1.3 Unmodified Solid Epoxy Resins	3-4
1.4 Modified Solid Epoxy Resins	5
1.5 Epoxy Resin Solutions	5-6
2.0 Bisphenol-F Based Epoxy Resins	7
3.0 Multifunctional Epoxy Resins	8-11
3.1 Epoxy Phenol Novolacs (EPN)	8-9
3.2 Epoxy Cresol Novolacs (ECN)	9
3.3 Glycidyl Amines Based Epoxy Resins	10
3.4 Miscellaneous Multifunctional Epoxy Resins	11
4.0 Brominated Epoxy Resins	12
5.0 Cycloaliphatic Epoxy Resins	12
6.0 Waterborne Epoxy Resins	13
7.0 Epoxy Reactive Diluents	14
8.0 Toughened/Flexibilized Resins	15
9.0 AroCy® Cyanate Ester Resins	15
10.0 Polyimide Resins	16-17
10.1 Kerimid® Polyimide Resins	16
10.2 Matrimid® Polyimide Resins	17
11.0 Benzoxazine Thermoset Resins	18
11.1 Benzoxazine Resins	18
11.2 Benzoxazine Modifiers	18
12.0 Epoxy Curing Agents	19-28
12.1 Aliphatic Amine Based	19
12.2 Cycloaliphatic Amine Based	20-21
12.3 Amidoamine and Polyamide Based	22-23
12.4 Phenalkamine and Mannich Based	24
12.5 Aromatic Amine Based	24
12.6 Anhydride	25
12.7 Waterborne	25-26
12.8 Waterborne Applications	27
12.9 Miscellaneous	28
13.0 Curing Accelerators	29-30
13.1 Liquid Accelerators	29
13.2 Solid Accelerators	30
14.0 Matting Agents	31
15.0 Miscellaneous Products	31
Product Index	32-36

Introduction

Huntsman is a world-leading producer of thermoset resins for the aerospace, automotive, energy, industrial composites, adhesives, electronics, coatings and construction markets. The thermoset resin chemistries offered by Huntsman include epoxy resins, epoxy reactive diluents, curing agents and crosslinkers for epoxy resins, benzoxazines, cyanate esters, polyimides and bismaleimides. Typical service temperatures for these products can range from room temperature to as high as 350°C.

The Araldite® and Tactix® epoxy resins produced by Huntsman are supplied in a range of viscosities, functionalities and epoxy equivalent weights for a wide range of industrial applications. Araldite® epoxy resins are typically based on bisphenol-A, bisphenol-F, tetrabromobisphenol-A, phenol novolacs, cresol novolacs, amino phenol, methylene dianiline and isocyanuric acid. Tactix® epoxy resins are based on bisphenol-A, tri(hydroxyphenyl) methane and dicyclopentadiene.

The maximum achievable cured Tg and the temperature range required to achieve a viscosity of 1,000 cP are shown in the figures below for various types of resins.

Aradur® curing agents are supplied in liquid or solid form and can be used in conjunction with all the epoxy resins to achieve a broad range of thermal, mechanical and electrical properties. Aradur® curing agents may be based on polyamides, aliphatic amines, cycloaliphatic amines, aromatic amines, anhydrides and novolacs.

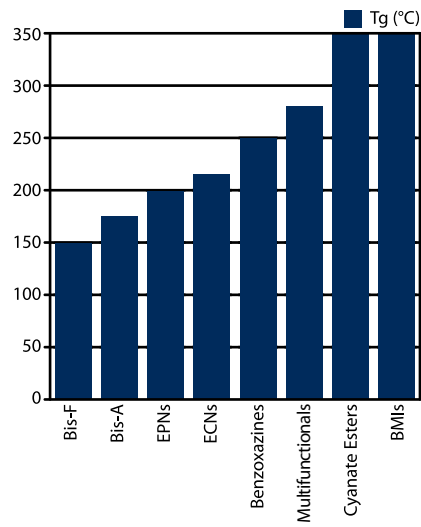
The figures below compare the Tg and the cure temperature of various types of Aradur® curing agents when used with a bisphenol-A based liquid epoxy resin (i.e. Araldite® GY 6010 resin).

AroCy® cyanate ester resins can provide high glass transition temperature (Tg = 170 – 350°C), low water absorption and low dielectric properties. They are typically used in aerospace applications, high-speed circuit boards, electronic chip adhesives and encapsulants, and syntactic foams. AroCy® cyanate ester resins are based on bisphenol-E, bisphenol-M or phenol novolac.

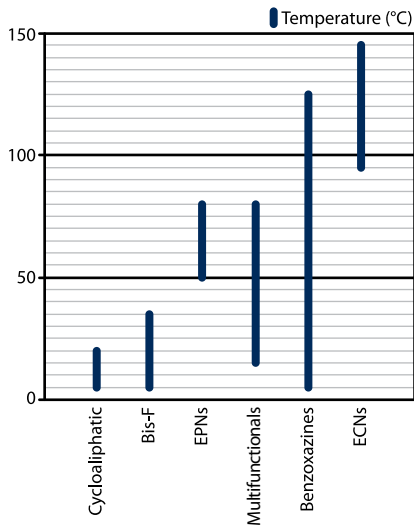
Kerimid® and Matrimid® resin systems provide outstanding heat performance (Tg = 220 – 350°C), excellent mechanical properties at both ambient and elevated temperatures, and low coefficient of thermal expansion. They are typically used for aerospace structures, high-speed circuit board substrates and high-performance adhesives. Kerimid® and Matrimid® resins are based on polyimide and bismaleimide (BMI) chemistries.

Araldite® benzoxazine resins represent a new addition to the comprehensive Huntsman product offering for advanced composites and high-performance coating systems. Araldite® benzoxazine resins can provide some unique combinations of thermal, mechanical and electrical properties.

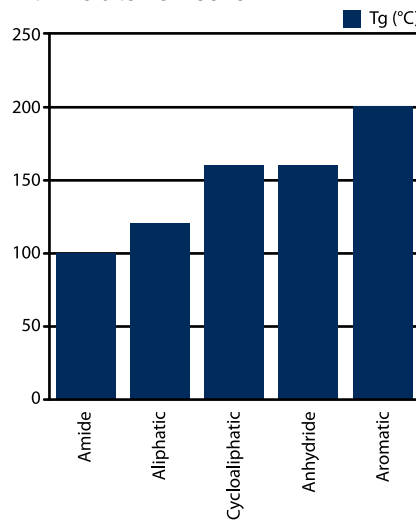
Resin Tg (Data)



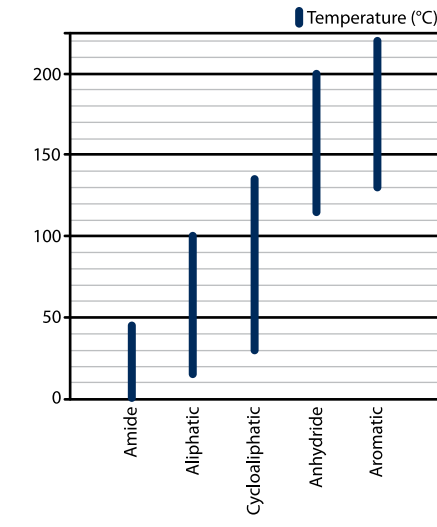
Temperature for 1,000 cp Overview



Hardener Tg Overview with Araldite® GY 6010



Hardener Curing Temperature Overview



Section 1 Bisphenol-A Based Epoxy Resins

1.1 – Unmodified Liquid Epoxy Resins

Product	Viscosity at 25°C, [cP]	Epoxide Eq. Weight [EEW, g/eq]	Density at 25°C [lb/gal, (g/cm ³)]	Color [Gardner]	Product Description
Araldite® GY 2600	11,000 – 14,000	184 – 188	9.8 (1.17)	≤ 1	Unmodified bisphenol-A based liquid epoxy resin. For use in automotive coatings or other applications requiring an epoxy resin with a low hydrolyzable chlorine content.
Araldite® GY 6008	6,500 – 10,500	177 – 188	9.8 (1.17)	≤ 1	High purity, low viscosity, unmodified liquid epoxy resin based on bisphenol-A and epichlorohydrin.
Araldite® GY 6010	11,000 – 14,000	182 – 192	9.8 (1.17)	≤ 1	Standard bisphenol-A based liquid epoxy resin.
Araldite® GY 6020	16,000 – 20,000	185 – 200	9.8 (1.17)	≤ 1	High-viscosity bisphenol-A based liquid epoxy resin.
Araldite® MY 790-1	4,000 – 5,500	170 – 175	9.8 (1.17)	≤ 1	Distilled bisphenol-A based liquid epoxy resin, with very low chloride content.
Araldite® LY 1556	11,000 – 13,000	182 – 192	1.17	≤ 1	Liquid bisphenol-A epoxy resin for composite systems.
Tactix® 123	4,400 – 5,600	172 – 176	9.8 (1.17)	≤ 1	High-purity, low-viscosity bisphenol-A based liquid epoxy resin.

1.2 – Modified Liquid Epoxy Resins

Product	Viscosity at 25°C, [cP]	Epoxide Eq. Weight [EEW, g/eq]	Density at 25°C [lb/gal, (g/cm ³)]	Color [Gardner]	Product Description
Araldite® GY 505	1,350 – 2,000	230 – 238	9.6 (1.15)	≤ 3	Bisphenol-A based liquid epoxy resin diluted with a non-reactive diluent.
Araldite® GY 506	500 – 700	175 – 189	9.4 (1.13)	≤ 1	Bisphenol-A liquid epoxy resin modified with a monofunctional reactive diluent.
Araldite® GY 507	500 – 700	180 – 192	9.5 (1.14)	≤ 3	Bisphenol-A liquid epoxy resin modified with a monofunctional reactive diluent.
Araldite® GY 508	2,000 – 5,000	390 – 425	9.4 (1.13)	≤ 5	Bisphenol-A liquid epoxy resin modified with a difunctional reactive diluent.
Araldite® GY 509	500 – 700	189 – 200	9.3 (1.12)	≤ 1	Bisphenol-A liquid epoxy resin modified with a monofunctional reactive diluent.
Araldite® GY 512	900 – 1,150	178 – 190	9.7 (1.16)	≤ 3	Bisphenol-A liquid epoxy resin modified with a monofunctional reactive diluent.

Section 1

Bisphenol-A Based Epoxy Resins *(continued)*

1.2 – Modified Liquid Epoxy Resins *(continued)*

Product	Viscosity at 25°C, [cP]	Epoxide Eq. Weight [EEW, g/eq]	Density at 25°C [lb/gal, (g/cm ³)]	Color [Gardner]	Product Description
Araldite® GY 6004	5,000 – 6,800	178 – 196	9.7 (1.16)	≤ 1	Bisphenol-A liquid epoxy resin modified with a monofunctional reactive diluent.
Araldite® GY 6005	7,500 – 9,500	182 – 196	9.7 (1.16)	≤ 1	Bisphenol-A liquid epoxy resin modified with a monofunctional reactive diluent.
Araldite® GY 9513	525 – 675	196 – 205	9.1 (1.09)	≤ 1	Bisphenol-A liquid epoxy resin modified with a monofunctional reactive diluent.
Araldite® GY 9580	1,600 – 2,000	188 – 198	9.2 (1.10)	≤ 3	Bisphenol-A liquid epoxy resin modified with a monofunctional reactive diluent.
Araldite® GY 9613	2,100 – 2,500	188 – 197	9.4 (1.13)	≤ 1	Bisphenol-A liquid epoxy resin modified with a monofunctional reactive diluent.
Araldite® GY 9615	3,100 – 3,900	188 – 200	9.2 (1.10)	≤ 1	Bisphenol-A liquid epoxy resin modified with a monofunctional reactive diluent.
Araldite® GY 9667	500 – 700	196 – 212	9.2 (1.10)	≤ 1	Bisphenol-A liquid epoxy resin modified with a monofunctional reactive diluent with low tendency to crystallize.
Araldite® LY 1564	1,200 – 1,400	161 – 173	9.6 (1.15)	≤ 2	Modified low viscosity bisphenol-A based liquid epoxy resin for filament winding and resin transfer molding applications.
Araldite® LY 1568	1,300 – 1,500	~190	9.2 – 10.0 (1.1–1.2)	≤ 1	Modified low viscosity bisphenol-A based liquid epoxy resin designed for industrial composite applications

1.3 – Unmodified Solid Epoxy Resins

Product	Softening Point [°C]	Epoxide Eq. Weight [EEW, g/eq]	Melt Viscosity at 150°C, [cP]	Color ¹ [Gardner]	Product Description
Araldite® GT 6063	90 – 97	640 – 730	1,500 – 3,400	≤ 1	Unmodified bisphenol-A solid epoxy resin. Specifically designed for powder coatings. Exceptional flow and leveling.
Araldite® GT 6084	95 – 105	875 – 1,025	R – T ²	N/A	Solid bisphenol-A based epoxy resin designed for the production of epoxy esters.

¹ At 25°C, 40% in butylcarbitol

² Gardner Holdt Viscosity, 40% in butylcarbitol

Section 1 Bisphenol-A Based Epoxy Resins *(continued)*

1.3 – Unmodified Solid Epoxy Resins *(continued)*

Product	Softening Point [°C]	Epoxide Eq. Weight [EEW, g/eq]	Melt Viscosity at 150°C, [cP]	Color ¹ [Gardner]	Product Description
Araldite® GT 6097	125 – 135	2,000 – 2,500	X – Z ²	≤ 3	High molecular weight epoxy resin for use in solvent-based industrial coatings in conjunction with urea, melamine or phenolic crosslinkers. Also used to control the melt viscosity of powder coating formulations.
Araldite® GT 6243	110 – 120	1,200 – 1,400	W – Z ²	≤ 3	High melt viscosity “6-type” solid resin. Designed for high quality industrial coatings and thick film powder coatings.
Araldite® GT 6248	75 – 85	505 – 560	800 – 1,500	≤ 1	Low molecular weight solid epoxy resin.
Araldite® GT 7013	85 – 92	650 – 725	2,200 – 3,200	≤ 1	Standard low molecular weight solid epoxy resin for epoxy / polyester hybrid and epoxy powder coatings.
Araldite® GT 7014	86 – 96	725 – 775	3,100 – 4,700	≤ 1	Low molecular weight solid epoxy resin for use in decorative powder coating applications. Improved edge coverage as compared to Araldite® GT 7013.
Araldite® GT 7071	65 – 75	450 – 530	D – G ²	≤ 2	Unmodified “1-type” solid epoxy resin for use in solvent-borne systems.
Araldite® GT 7072	75 – 85	600 – 700	600 – 1,500	≤ 1	Low molecular weight epoxy resin. For use in conjunction with higher molecular weight epoxy resins to improve flow and leveling properties.
Araldite® GT 7074	97 – 110	935 – 1,175	3,000 – 6,000 ³	≤ 1	Intermediate molecular weight epoxy resin for use in powder coatings with outstanding flexibility and impact resistance.
Araldite® GT 7097	113 – 123	1,500 – 2,000	W – Z ²	≤ 3	Standard “7-type” solid epoxy resin for use in conjunction with urea-formaldehyde, melamine-formaldehyde or phenolic resoles for packaging and coil coating applications.
Araldite® GT 9013	83 – 90	650 – 725	1,600 – 2,600	≤ 1	Standard unmodified solid epoxy resin with improved flow properties as compared to Araldite® GT 7013.
Araldite® GT 9545	95 – 105	875 – 1,025	1,100 – 2,100 ³	≤ 2	Intermediate molecular weight epoxy resin for use in powder coating formulations requiring outstanding storage stability under adverse conditions.
Araldite® GT 9654	75 – 85	500 – 562	800 – 1,800	≤ 1	“1-type” solid epoxy resin supplied in flakes. For use in ambient cure solvent-borne systems or as a modifier for standard powder coating resins.

¹ At 25°C, 40% in butylcarbitol ² Gardner Holdt Viscosity, 40% in butylcarbitol

³ Melt viscosity at 175°C

Section 1

Bisphenol-A Based Epoxy Resins *(continued)*

1.4 – Modified Solid Epoxy Resins

Product	Softening Point [°C]	Epoxide Eq. Weight [EEW, g/eq]	Melt Viscosity at 150°C, [cP]	Color ¹ [Gardner]	Product Description
Araldite® GT 6259	76 – 86	385 – 476	500 – 2,000	≤ 4	Epoxy cresol novolac modified solid epoxy resin. For use in powder coatings with good thermal and chemical resistance properties.
Araldite® GT 7220	85 – 92	500 – 546	1,000 – 2,500	≤ 2	Epoxy phenol novolac modified solid epoxy resin. Improved thermal and chemical resistance properties as compared to standard unmodified bisphenol-A solid epoxy resins.
Araldite® GT 7255	106 – 113	775 – 855	2,400 – 4,000	≤ 2	Epoxy phenol novolac modified solid epoxy resin. Improved thermal and chemical resistance properties as compared to standard unmodified bisphenol-A solid epoxy resins.

1.5 – Epoxy Resin Solutions

Product	Viscosity at 25°C, [cP]	Epoxide Eq. Weight ⁴ [EEW, g/eq]	Density at 25°C [lb/gal, (g/cm ³)]	Color [Gardner]	Solids Content [%]	Product Description
Araldite® GZ 471 X-75	Z3 – Z5 ⁵	450 – 530	9.0 (1.08)	≤ 3	74 – 76	Low molecular weight solid epoxy resin supplied at 75% non-volatiles in xylene. For formulating two-component industrial maintenance coatings.
Araldite® GZ 488 N-40	V – Y ⁵	3,750 – 5,500	8.0 (0.96)	≤ 5	39 – 41	Very high molecular weight epoxy resin supplied at 40% non-volatiles in a blend of propylene glycol monomethyl ether acetate / methyl ethyl ketone / cyclohexanone. This resin provides outstanding adhesion, flexibility and toughness and is designed for formulating heat-cured industrial coatings.
Araldite® GZ 488 V-32	Y – Z2 ⁵	3,750 – 5,500	8.4 (1.01)	≤ 3	31 – 33	Very high molecular weight epoxy resin supplied at 32% non-volatiles in propylene glycol monomethyl ether acetate. It provides outstanding adhesion, flexibility and toughness and is designed for formulating heat-cured industrial coatings.
Araldite® GZ 540 X-90	Z4 – Z6 ⁵	233 – 278	9.4 (1.13)	≤ 3	89 – 91	Liquid epoxy resin supplied at 90% non-volatiles in xylene. For formulating high solids, two-component architectural and industrial maintenance coatings.
Araldite® GZ 571 KX-75	Z1 – Z4 ⁵	450 – 530	9.0 (1.08)	≤ 3	74 – 76	Low molecular weight solid epoxy resin supplied at 75% non-volatiles in xylene / methyl isobutyl ketone. For formulating two-component industrial maintenance coatings.

¹ At 25°C, 40% in butylcarbitol

⁴ On solids

⁵ Gardner Holdt Viscosity

Section 1

Bisphenol-A Based Epoxy Resins *(continued)*

1.5 – Epoxy Resin Solutions *(continued)*

Product	Viscosity at 25°C, [cP]	Epoxy Eq. Weight ⁴ [EEW, g/eq]	Density at 25°C [lb/gal, (g/cm ³)]	Color [Gardner]	Solids Content [%]	Product Description
Araldite® GZ 571 T-75	Z2 – Z4 ⁵	450 – 530	9.1 (1.09)	≤ 5	74 – 76	Low molecular weight solid epoxy resin supplied at 75% non-volatiles in toluene. For formulating two-component industrial maintenance coatings.
Araldite® GZ 597 KT-55	1,800 – 4,500	1,660 – 2,000	8.4 9 (1.01)	≤ 4	54 – 56	Solution of Araldite® GT 7097 supplied at 55.0 ± 1.0 % non-volatiles in a blend of methyl isobutyl ketone and toluene.
Araldite® GZ 6097 PM-55	Z4 – Z7 ⁵	2,000 – 2,500	9.1 (1.09)	≤ 3	54 – 56	High molecular weight solid epoxy resin supplied at 55% non-volatiles in propylene glycol monomethyl ether acetate. For the formulation of heat-cured industrial coatings in combination with urea, melamine or phenolic based crosslinkers.
Araldite® GZ 7071 F-65	Z – Z4	450 – 530	8.9 (1.07)	≤ 2	63.5 – 66.5	Low molecular weight solid epoxy resin solution supplied at 65.0 ± 1.5 % non-volatiles in tertiary butyl acetate.
Araldite® GZ 7071 OX-65	V – X ⁵	455 – 525	8.8 (1.05)	≤ 2	64 – 66	Low molecular weight solid epoxy resin supplied at 75% non-volatiles in Aromatic 100 / xylene. For the formulation of two-component industrial maintenance coatings.
Araldite® GZ 7071 PM-75	Z4 – Z6 ⁵	450 – 575	9.1 (1.09)	≤ 3	74 – 76	Low molecular weight solid epoxy resin supplied at 75% non-volatiles in propylene glycol monomethyl ether. For the formulation of two-component industrial maintenance coatings.
Araldite® GZ 7488 V-40	3,000 – 6,000	> 6,600	8.4 (1.01)	≤ 4	39 – 41	Very high molecular weight epoxy resin supplied at 40% non-volatiles in propylene glycol monomethyl ether acetate. For use in the formulation of heat-cured industrial coatings with outstanding adhesion, flexibility and toughness.
Araldite® GZ 9625 W-90	Z2 – Z6 ⁵	230 – 280	9.2 (1.10)	≤ 3	89 – 91	Liquid epoxy resin supplied at 90% non-volatiles in n-butanol. General purpose epoxy resin solution for the formulation of ambient cure, two-component epoxy systems.
Araldite® GZ 9749 OX 65	T – V ⁵	450 – 500	8.8 (1.05)	≤ 2	64 – 66	Low molecular weight solid epoxy resin supplied at 65% non-volatiles in Aromatic 100 / propylene glycol monomethyl ether.

⁴ On solids

⁵ Gardner Holdt Viscosity

Section 2 Bisphenol-F Based Epoxy Resins

Product	Viscosity at 25°C, [cP]	Epoxide Eq. Weight [EEW, g/eq]	Density at 25°C [lb/gal, (g/cm ³)]	Color ¹ [Gardner]	Product Description
Araldite® GY 281	5,000 – 7,000	159 – 172	10.0 (1.20)	≤ 4	Unmodified bisphenol-F based liquid epoxy resin. Offers better chemical resistance (to organic solvents in particular) than standard bisphenol-A based liquid epoxy resin.
Araldite® GY 282	3,300 – 4,100	164 – 172	9.9 (1.19)	≤ 2	Medium-viscosity unmodified bisphenol-F based liquid epoxy resin. For use in adhesives, filament winding, casting, pultrusion, RTM, coatings and construction applications.
Araldite® GY 285	2,000 – 3,000	164 – 172	9.9 (1.19)	≤ 5	Low-viscosity unmodified bisphenol-F based liquid epoxy resin. For use in adhesives, filament winding, casting, pultrusion, RTM, coatings and construction applications.
Araldite® PY 306	1,200 – 1,600	156 – 167	10.0 (1.20)	≤ 1	High-purity, low-viscosity unmodified bisphenol-F based liquid epoxy resin. For use in adhesives, filament winding, casting, pultrusion, RTM, electrical and electronic applications.
Araldite® PY 302-2	6,500 – 8,000	170 – 177	9.8 (1.17)	≤ 3	Non-crystallizing bisphenol-A/F based liquid epoxy resin blend. For use in ambient-cure coating and construction applications.
Araldite® PY 313	850 – 1,150	180 – 192	9.6 (1.15)	≤ 2	Non-crystallizing bisphenol-A/F based liquid epoxy resin blend modified with a monofunctional reactive diluent. For use in coating and construction applications.
Araldite® GY 9820 EPN	2,000 – 3,000	163 – 172	9.9 (1.19)	≤ 5	Low viscosity epoxy phenol novolac. Suitable for use in adhesives, filament winding, casing pultrusion, RTM, coatings and construction applications.

¹ At 25°C, 40% in butylcarbitol

Section 3 Multifunctional Epoxy Resins

3.1 – Epoxy Phenol Novolacs (EPN)

Product	Viscosity at 25°C, [cP]	Epoxide Eq. Weight [EEW, g/eq]	Density at 25°C [lb/gal, (g/cm ³)]	Color [Gardner]	Product Description
Araldite® EPN 1138	20,000 – 50,000 ⁷	175 – 182	10.2 (1.22)	≤ 2	Epoxy phenol novolac with high functionality. Suitable for applications such as coatings, filament winding, casting and pultrusion applications where superior heat and chemical resistance are required.
Araldite® EPN 1138 A-85	500 – 1,200	175 – 181	9.4 (1.13)	≤ 2	Araldite® EPN 1138 solution supplied at 85% non-volatiles in acetone. For applications requiring heat and chemical resistance.
Araldite® EPN 1138 MAK-80	600 – 1,200	175 – 181	9.2 (1.10)	≤ 2	Araldite® EPN 1138 solution supplied at 80% non-volatiles in methyl n-amyl ketone. For applications requiring heat and chemical resistance.
Araldite® EPN 1138 N-85	600 – 1,600	175 – 181	9.2 (1.10)	≤ 2	Araldite® EPN 1138 supplied at 85% non-volatiles in methyl ethyl ketone.
Araldite® EPN 1139	1,100 – 1,700 ⁷	172 – 179	10.2 (1.22)	≤ 2	Epoxy phenol novolac suitable for coatings, filament winding, casting and pultrusion applications.
Araldite® EPN 1179	1,100 – 1,700 ⁷	172 – 179	10.0 (1.20)	≤ 3	Epoxy phenol novolac suitable for coatings, filament winding, casting and pultrusion applications.
Araldite® EPN 1180	20,000 – 50,000 ⁷	175 – 182	10.0 (1.20)	≤ 2	Epoxy phenol novolac with high functionality. Suitable for use in coatings, filament winding, casting and pultrusion applications where superior heat and chemical resistance are required.
Araldite® EPN 1180 A-85	500 – 1,200	175 – 181	9.4 (1.13)	≤ 2	Araldite® EPN 1180 solution supplied at 85% non-volatiles in acetone. For applications requiring heat and chemical resistance.
Araldite® EPN 1180 X-80	1,200 – 2,000	175 – 182	9.8 (1.18)	≤ 2	Araldite® EPN 1180 supplied at 80% non-volatiles in xylene. For coating applications requiring high heat and chemical resistance.
Araldite® EPN 9850	20,000 – 26,000	168 – 178	10.0 (1.20)	≤ 3	Low-viscosity epoxy phenol novolac resin specifically designed for the formulation of ambient cure high solids and solvent free coatings and floorings with good heat and chemical resistance.

⁷ At 52°C

Section 3 Multifunctional Epoxy Resins *(continued)*

3.1 – Epoxy Phenol Novolacs (EPN) *(continued)*

Product	Viscosity at 25°C, [cP]	Epoxide Eq. Weight [EEW, g/eq]	Density at 25°C [lb/gal, (g/cm ³)]	Color [Gardner]	Product Description
Araldite® EPN 9880	18,000 – 25,000 ⁷	171 – 185	10.0 (1.20)	≤ 5	Modified epoxy phenol novolac resin for use in chemical resistant lining and coating applications.
Araldite® EPN 9881	7,500 – 9,500 ⁷	175 – 185	10.0 (1.20)	≤ 5	Modified epoxy phenol novolac resin for use in chemical resistant lining and coating applications.
Araldite® GY 289	7,000 – 11,000	167 – 175	9.9 (1.19)	≤ 5	Low-viscosity epoxy phenol novolac designed for the formulation of high solids or solvent-free chemical resistant coatings and linings.
Araldite® PY 307-1	30,000 – 50,000	169 – 179	10.0 (1.20)	≤ 4	Epoxy phenol novolac resin suitable for the formulation of protective coatings with good heat, solvent and chemical resistance. Also suitable for filament winding, casting and pultrusion applications.

3.2 – Epoxy Cresol Novolacs (ECN)

Product	Softening Point [°C]	Epoxide Eq. Weight [EEW, g/eq]	Melt Viscosity at 150°C, [cP]	Color ¹ [Gardner]	Product Description
Araldite® ECN 1273	68 – 78	217 – 233	400 – 800	≤ 6	Epoxy cresol novolac with a functionality of 4.8. For high-temperature adhesives, electrical and laminating products.
Araldite® ECN 1280	75 – 85	213 – 233	800 – 1,400	≤ 6	Epoxy cresol novolac with a functionality of 5.1. For high-temperature adhesives, coatings, electrical and laminating products. Suitable for use in combination with an unmodified solid bisphenol-A epoxy resin in powder coating formulations to improve chemical and scratch resistance.
Araldite® ECN 1299	85 – 100	217 – 244	1,400 – 4,000	≤ 6	Epoxy cresol novolac with functionality of 5.4; highest melting ECN. Suitable for the formulation of powder coatings systems with high temperature and chemical resistance.
Araldite® ECN 9511	32 – 42	200 – 227	N/A	≤ 7	Epoxy cresol novolac with functionality of 2.7.

¹ At 25°C, 40% in butylcarbitol

Section 3 Multifunctional Epoxy Resins *(continued)*

3.3 – Glycidyl Amines Based Epoxy Resins

Product	Viscosity at 25°C, [cP]	Epoxide Eq. Weight [EEW, g/eq]	Product Description
Araldite® MY 0500	2,000 – 5,000	105 – 115	Trifunctional epoxy resin based on para-aminophenol. Performance additive for bisphenol-A resins. For use in rapid-cure adhesives, laminates, or other structural composite applications requiring high-heat deflection temperature.
Araldite® MY 0510	550 – 850	95 – 107	High-purity, low-viscosity trifunctional epoxy resin based on para-amino phenol. Improved stability. Enhances the performance of bisphenol-A resin. For use in rapid-cure adhesives, laminates, or other structural composite applications requiring high-heat deflection temperature.
Araldite® MY 0600	7,000 – 13,000	102 – 110	Trifunctional epoxy resin based on meta-aminophenol. For use in adhesives, laminates or other structural composite applications requiring high-modulus, high hot-wet performance and toughness.
Araldite® MY 0610	1,000 – 6,000	95 – 102	High-purity, low-viscosity trifunctional epoxy resin based on meta-aminophenol. For use in adhesives, laminates or other structural composite applications requiring high-modulus, high hot-wet performance and toughness.
Araldite® MY 720	7,000 – 19,000 [§]	117 – 134	Tetra-functional epoxy based on methylene dianiline. Excellent high temperature, chemical and radiation resistance. Used for high-performance structural composites, adhesives, laminates and high energy radiation resistant compound.
Araldite® MY 721	3,000 – 6,000 [§]	111 – 117	Tetra-functional epoxy resin based on methylene dianiline.
Araldite® MY 9512	11,000 – 13,000 [§]	117 – 134	Tetra-functional epoxy based on methylene dianiline.
Araldite® MY 9612	10,000 – 12,000 [§]	117 – 134	Tetra-functional epoxy based on methylene dianiline.
Araldite® MY 9634	13,000 – 15,000 [§]	117 – 134	Tetra-functional epoxy based on methylene dianiline.
Araldite® MY 9655	7,000 – 10,000 [§]	117 – 134	Tetra-functional epoxy based on methylene dianiline.
Araldite® MY 9663	17,000 – 19,000 [§]	117 – 134	Tetra-functional epoxy based on methylene dianiline.

[§] At 50°C

Section 3

Multifunctional Epoxy Resins *(continued)*

3.4 – Miscellaneous Multifunctional Epoxy Resins

Product	Viscosity at 25°C, [cP]	Epoxide Eq. Weight [EEW, g/eq]	Product Description
Araldite® MY 0816	1,500 – 2,500 ⁸	144 – 151	Difunctional epoxy resin based on 1,6 naphthalene diepoxy. Moderate viscosity. Suitable for applications requiring high glass transition temperatures.
Araldite® PT 810	N/A	100 – 108	Powder coating grade triglycidyl isocyanurate (TGIC). Softening point (88-98°C).
Tactix® 556	1,000 – 1,500 ¹⁰	225 – 240	Dicyclopentadiene-based epoxy. Very low moisture pickup. Recommended for adhesives and composites used at elevated temperatures.
Tactix® 742	25 – 60 ¹¹	150 – 170	Trifunctional epoxy with excellent Tg and thermal stability.
Tactix® 756	N/A	250 – 275	Dicyclopentadiene-based epoxy. Very low moisture pickup. Recommended for adhesives and composites used at elevated temperatures. Softening point (78-90°C).

⁸ At 50°C

¹⁰ At 85°C

¹¹ At 150°C

Section 4 Brominated Epoxy Resins

Product	Viscosity at 25°C, [cP]	Epoxide Eq. Weight ⁴ [EEW, g/eq]	Product Description
Araldite® CY 8043	3,000 – 4,200	222 – 239	Liquid brominated epoxy resin (23 – 26% bromine). 100% solids.
Araldite® LT 8049	N/A	322 – 417	Solid brominated epoxy resin containing approximately 50% bromine. For use in electrical laminates to achieve the desired fire resistance properties.
Araldite® LZ 8001 A-80	1,200 – 2,500	410 – 460	Bisphenol-A epoxy at 80% solids in acetone (18-21% bromine). For use in the manufacture of thin laminates, prepregs and rigid laminates for flame retardant printed wiring boards.

Section 5 Cycloaliphatic Epoxy Resins

Product	Viscosity at 25°C, [cP]	Epoxide Eq. Weight [EEW, g/eq]	Product Description
Araldite® CY 179-1	100 – 600	130 – 143	A cyclic di-epoxy carboxylate, low-viscosity liquid epoxy. For high temperature outdoor electrical and casting applications and filament winding applications.
Araldite® CY 184	700 – 1,000	144 – 172	Low-viscosity cycloaliphatic epoxy recommended for use in the manufacture of medium and high-voltage electrical insulating components.
Araldite® CY 192-1	430 – 660	150 – 167	Low-viscosity cycloaliphatic epoxy resin designed for casting, potting and vacuum pressure impregnation applications.
Araldite® CY 5622	3,000 – 5,000	179 – 187	Hydrophobic liquid modified cycloaliphatic epoxy resin (diglycidylester). It is suitable for outdoor medium and high-voltage applications that perform under humid and severe climatic conditions such as apparatus components, pin/post insulators, bushings, instrument transformers and sensors.
Araldite® CY 9729	300 – 500	181 – 193	Low-viscosity cycloaliphatic epoxy recommended for use in the manufacture of medium and high-voltage electrical insulating components. Indoor and outdoor applications.

⁴ On solids

Section 6 Waterborne Epoxy Resins

Product	Viscosity at 25°C, [cP]	Epoxide Eq. Weight ⁴ [EEW, g/eq]	Density at 25°C [lb/gal, (g/cm ³)]	Solids Content [%]	Particle Size [µm]	Product Description
Araldite® PZ 3901	7,000 – 20,000	515 – 555	9.0 (1.08)	53.5 – 56.5	< 1 (50%)	Solid “1-type” epoxy resin dispersion. Excellent stability, small particle size, good chemical resistance. For use in industrial maintenance coatings on both metal and concrete substrates.
Araldite® PZ 3961-1	400 – 750	490 – 550	9.2 (1.10)	51 – 55	≤ 1	Epoxy resin emulsion of a solid “1-type” epoxy resin that offers a good combination of properties for ambient or force curing coatings on metal and can be used for concrete. Metal coatings based on this emulsion show rapid dry time, good adhesion, flexibility and corrosion resistance.
Araldite® PZ 3903-2	8,000 – 20,000	715 – 800	9.0 (1.08)	53 – 58	< 2 (Mean)	“3-type” solid epoxy resin dispersion. Very good stability, small particle size, excellent adhesion. For use in fiber-sizing, textiles and non-woven applications.
Araldite® PZ 323	N/A	222 – 250	9.6 (1.15)	75 – 80	< 2	Araldite® PY 307-1 based epoxy phenol novolac emulsion. Good abrasion resistance, toughness, and chemical resistance. For use in adhesives, fiber-sizing, textiles, abrasives, and paper treatment applications.

⁴ On solids

Section 7 Epoxy Reactive Diluents

Product	Viscosity at 25°C, [cP]	Epoxide Eq. Weight [EEW, g/eq]	Density at 25°C [lb/gal, (g/cm ³)]	Color [Gardner]	Product Description
Araldite® DY 026	< 15	108 – 118	9.2 (1.10)	≤ 2	Electronic-grade aliphatic difunctional epoxy (1,4 butanediol diglycidyl ether).
Araldite® DY 3601	42 – 52	385 – 405	8.6 (1.03)	≤ 3	Low-viscosity, polypropylene glycol-based epoxy resin. Enhances flexibility and impact resistance.
Araldite® DY-C	50 – 100	153 – 167	9.2 (1.10)	≤ 2	Cycloaliphatic difunctional epoxy reactive diluent (cyclohexanedimethanol diglycidylether). Gives moderate viscosity reduction with minimal loss of properties.
Araldite® DY-CNO	30 – 70	416 – 588	8.1 (0.97)	≤ 13	Monofunctional epoxy reactive diluent based on cashew nut shell liquid (CNSL). Low volatility.
Araldite® DY-D	15 – 25	117 – 125	9.2 (1.10)	≤ 2	Aliphatic difunctional epoxy reactive diluent (1,4 butanediol diglycidyl ether). Excellent viscosity reducer with good physical retention properties.
Araldite® DY-E	≤ 15	280 – 315	7.4 (0.89)	≤ 1	Aliphatic monofunctional epoxy reactive diluent (C ₁₂ – C ₁₄ glycidyl ether). Efficient viscosity and surface tension reducer.
Araldite® DY-J	≤ 15	220 – 250	7.5 (0.90)	≤ 1	Aliphatic monofunctional epoxy reactive diluent (C ₈ – C ₁₀ glycidyl ether). Very effective viscosity reducer for general purpose use.
Araldite® DY-K	5 – 25	167 – 189	9.0 (1.08)	≤ 2	Aromatic monofunctional epoxy reactive diluent (cresyl glycidyl ether). Low volatility and good chemical resistance.
Araldite® DY-N	10 – 18	125 – 145	8.9 (1.07)	≤ 1	Aliphatic difunctional epoxy reactive diluent (neopentyl glycol diglycidylether).
Araldite® DY-P	20 – 28	222 – 244	8.9 (1.07)	≤ 3	Aromatic monofunctional epoxy reactive diluent (p-tertiarybutylphenol glycidyl ether). Low volatility and good chemical resistance.
Araldite® DY-T	100 – 300	111 – 143	9.3 (1.12)	≤ 3	Aliphatic trifunctional epoxy reactive diluent (trimethylolpropane triglycidylether). Excellent resistance to organic solvents.

Section 8 Toughened / Flexibilized Resins

Product	Viscosity at 25°C, [cP]	Epoxide Eq. Weight [EEW, g/eq]	Product Description
Araldite® PY 4122	700 – 1,400	310 – 390	Low-viscosity, unmodified, tough, flexible epoxy with excellent workability. For use as a modifier in high-solids coatings requiring toughness, adhesion, corrosion and abrasion resistance. Suitable for composite and casting applications.
Flexibilizer DY 965	4,400 – 12,800 ¹²	558 – 667 ¹³	Polyurethane polyol for high-impact resistance. Improves adhesion to metals and for dust-free electronics.
Tactix® 695-1	1,500 – 5,500 ¹⁴	335 – 410	Single-phase toughened epoxy.
XU 3508	11,000 – 15,000	185 – 205	Liquid toughened epoxy resin based on bisphenol-A. Used for filament winding, pultrusion and adhesives applications.

Section 9 AroCy® Cyanate Ester Resins

Product	Viscosity at 25°C, [cP]	Product Description
AroCy® L-10	70 – 110	Bisphenol-E based lowest-viscosity cyanate ester. For use in filament winding, RTM, and pultrusion applications. May also be used as a viscosity modifier for other cyanate ester systems.
AroCy® XU 366	100 – 1,000 ¹⁵	Bisphenol-M based lowest-cure temperature (121°C) cyanate ester. Exceptional dielectric properties. Uses include microwave antennas, radomes, structural and electronic-grade adhesives.
AroCy® XU 371	300 – 600 ¹⁶	Novolac-based cyanate ester. For use in high-temperature composites and adhesives, where Tg in excess of 300°C is required.
AroCy® XU 378	600 – 1,000 ¹⁶	Bisphenol-M based lowest cure temperature (121°C) cyanate ester. Exceptional dielectric properties. Uses include microwave antennas, radomes, structural and electronic-grade adhesives.

¹² Poise at 40°C
¹³ Hydroxyl equivalent weight

¹⁴ At 70°C
¹⁵ At 65°C
¹⁶ At 82°C

Section 10 Polyimide Resins

10.1 – Kerimid® Polyimide Resins

Product	Viscosity at 25°C, [cP]	Gel Time at 171°C [min.]	Solids Content [%]	Product Description
Kerimid® 701 A A-70	3,600 max	200 – 450	69 – 71	MDA-free polyimide solution for applications requiring high service temperature (e.g., printed circuit board, laminates, high-performance composites). Supplied at 70% non-volatiles in acetone.
Kerimid® 701 A N-70	1,300 – 3,600	150 – 450	69 – 71	MDA-free polyimide solution for use in high-temperature circuit boards. Supplied at 70% non-volatiles in methyl ethyl ketone.
Kerimid® 701 C	50 – 150	N/A	35 – 37	A polyimide laminating product for use in conjunction with Kerimid® 701 A to achieve superior thermal performance as well as UL 94 V-1 flammability performance.
Kerimid® 701 D	60 max	N/A	30 – 34	Halogen-free component for Kerimid® 701 A.
Kerimid® 701-1 B	20 – 80	N/A	43 – 45	A polyimide laminating product for use in conjunction with Kerimid® 701 A to achieve UL 94 V-O flammability performance.
Kerimid® 8292 N-75	1,000 – 6,000	200 – 300	74 – 76	MDA-free polyimide resin solution for use in high-temperature circuit boards. Supplied at 75% non-volatiles in methyl ethyl ketone.
Kerimid® 8292 NPM 60	100 – 600	350 – 500	59 – 64	MDA-free polyimide resin solution for use in high-temperature circuit boards. Supplied at 60% non-volatiles in methyl ethyl ketone and propylene glycol monomethyl ether.

Section 10 Polyimide Resins *(continued)*

10.2 – Matrimid® Polyimide Resins

Product	Viscosity at 25°C, [cP]	Appearance	Product Description
Matrimid® 2292	100 max	Clear Yellow Liquid	Low-viscosity resin for use as a reactive diluent for epoxy, bismaleimide or polyimides. Provides excellent mechanical properties at ambient or elevated temperatures.
Matrimid® 5218	N/A	Yellow Powder	Soluble thermoplastic polyimide powder. Very high glass transition temperature. Excellent high temperature properties for use in structural composites and adhesives.
Matrimid® 5292 A-2	N/A	Beige Powder	4,4 Bismaleimidodiphenylmethane. Use with Matrimid® 5292 B to optimize processing, toughness and performance.
Matrimid® 5292 B	12,000 – 20,000	Amber Liquid	O,O' – Diallyl bisphenol-A hardener. Use with Matrimid® 5292 A-2 to optimize toughness, processing and performance.
Matrimid® 9725	N/A	Yellow Powder	Micropulverized version of Matrimid® 5218.

Section 11

Benzoxazine Thermoset Resins

11.1 – Benzoxazine Resins

Product	Viscosity at 125°C, [cP]	Melting Point [°C]	Gel Time at 220°C [sec.]	Product Description
Araldite® MT 35700	500 – 2,500 ²⁴	55 – 65	200 – 450	Bisphenol-F based benzoxazine thermoset resin. Can be homopolymerized or co-reacted with an epoxy or phenolic resin resulting in polymers with high-temperature resistance, good flammability resistance (UL94 V1), high modulus, low water absorption and high dimensional stability.
Araldite® MT 35710 FST	30 – 100 (at 100°C)	n.d.	300 – 450	Thermosetting benzoxazine resin designed for transportation interior or other composite applications where low flammability is required. As with other benzoxazine resins no volatiles are being released during curing.
Araldite® LZ 8280 N 75	100 – 400	N/A	380 – 420	Bisphenol-F based benzoxazine supplied at 75% non-volatiles in acetone for the production of electrical laminates and prepregs.
Araldite® LZ 8282 N 70	500 – 3,000 ¹⁷	N/A	250 – 350	Single component, ready-to-use benzoxazine resin supplied as a solution in methyl ethyl ketone and n-butanol 70% solids content. For use in the manufacture of halogen-free, high-temperature resistant electrical laminates and prepregs.
XU 35610	200 – 600	58 – 70	160 – 450	Bisphenol-A based benzoxazine thermosetting resin which can be homopolymerized or co-reacted with an epoxy or a phenol novolac resin resulting in polymers with high temperature resistance, high modulus, low water absorption and high dimension stability.
XU 35910	100 – 500 (at 110°C)	n.d.	150 – 300	Epoxy modified thiodephenol based benzoxazine designed for composite applications requiring high thermal resistance properties and moisture resistance.

11.2 – Benzoxazine Modifiers

Product	Appearance	Melting Point [°C]	Acid Value [mgKOH/g]	Product Description
Accelerator DT 300	White crystals	154 – 156	N/A	Effective for the homopolymerization of benzoxazine resins and for epoxy/benzoxazine-based formulations. Can be used to shorten the cure cycle.
Accelerator DT 310	White crystals	127 – 134	600 – 650	Effective for the homopolymerization of benzoxazine resins and for epoxy/benzoxazine-based formulations. Can be used to lower cure temperature.
XU 35500	N/A	N/A	N/A	Low viscosity liquid benzoxazine resin suitable for the viscosity reduction of benzoxazine or epoxy resins. Excellent thermal properties and moisture resistance.

¹⁷ At 25°C

²⁴ At 100°C

Section 12 Epoxy Curing Agents

12.1 – Aliphatic Amine Based

Product	Viscosity at 25°C, [cP]	H+ Active Equivalent [g/eq]	Density at 25°C [lb/gal, (g/cm ³)]	Typical Mix ratio ¹⁸ [g/100g]	Gel Time ¹⁸ 100g at 23°C [minutes]	Color ¹ [Gardner]	Product Description
Aradur® 21	<10	40	7.2 (0.87)	21	51	≤ 1	Trimethyl hexamethylene diamine (TMD)
Aradur® 70	17,000 – 27,000	900	8.5 (1.02)	400 phr	298	≤ 5	A high-viscosity polyether urethane amine curing agent suitable for the formulation of flexible binder systems, impact-resistant coatings, and sealers.
Aradur® 75	3,000 – 5,500	250	8.1 (0.97)	100:129	~40	≤ 4	Medium viscosity, formulated polyether-urethane polyamine.
Aradur® 76	1,100 – 1,900	250	8.1 (0.97)	133	65	≤ 6	Formulated polyamine curing agent. For the formulation of two-component flexible membranes, adhesives, flooring and sealants.
Aradur® 77	~1,750	250	8.1 (0.97)	133	90	≤ 3	Formulated polyamine curing agent. For the formulation of two component flexible membranes, adhesives, flooring and sealants. Provides a longer working time than Aradur® 76.
Aradur® 356	1,000 – 2,500	65	8.1 (0.97)	35	37	≤ 3	Suitable for industrial maintenance coatings, tank linings, pipe coatings and flooring. Phenol-free version of Aradur® 837.
Aradur® 837	2,700 – 3,700	76	8.2 (0.98)	35	22	≤ 3	Suitable for the formulation of two-component wood, concrete and metal coatings, linings and flooring. Accelerator for polyamides. Good chemical resistance.
Aradur® 943	3,000 – 5,000	38	8.9 (1.07)	20	15	≤ 6	Suitable for tank linings and chemical processing equipment. Excellent resistance to organic solvents (especially alcohols and gasoline) and hydrochloric acid.
Aradur® 956-2	290 – 500	47	8.5 (1.02)	25	31	≤ 4	Suitable for adhesives, casting, potting, tooling, laminating and coatings.
Aradur® 3227	950 – 1,350	157	8.0 (0.96)	84	14	≤ 2	Polyetheramine-based curing agent. Used in fast cure, two-component epoxy repair mortars, construction adhesives, coating and flooring applications.
Aradur® 3275	200 – 400	250	8.3 (0.99)	133	183	≤ 6	Polyetheramine-based curing agent. Low-viscosity flexible hardener for use in flexible membranes, adhesives, flooring and sealants. Benzyl alcohol and nonyl phenol free.

¹ At 25°C, 40% in butylcarbitol

¹⁸ With Araldite® GY 6010 Liquid Epoxy Resin

Section 12 Epoxy Curing Agents *(continued)*

12.2 – Cycloaliphatic Amine Based

Product	Viscosity at 25°C, [cP]	H+ Active Equivalent [g/eq]	Density at 25°C [lb/gal, (g/cm ³)]	Typical Mix ratio ¹⁸ [g/100g]	Gel Time ¹⁸ 100g at 23°C [minutes]	Color ¹ [Gardner]	Product Description
Aradur [®] 22	< 8	34	8.8 (1.05)	18	n.d.	≤ 2	m-Xylene diamine (MXDA)
Aradur [®] 42	10 – 20	42	7.7 (0.92)	22.5	n.d.	≤ 1	Isophorone diamine (IPDA)
Aradur [®] 48 S	45 – 75	75	8.8 (1.05)	40	25	≤ 8	Suitable for solvent-free coatings, self-leveling flooring and epoxy mortars.
Aradur [®] 265-1	Z1 – Z5 ⁵	94	9.0 (1.08)	50	49	≤ 10	Suitable for chemical storage tanks and chemical process equipment.
Aradur [®] 355	D – L ⁵	48.5	8.6 (1.03)	26	27	≤ 7	Suitable for tank linings, refineries, flooring, cargo ship tanks and secondary containment.
Aradur [®] 847	150 – 300	75	8.4 (1.01)	40	35	≤ 2	Coatings and flooring with good chemical resistance.
Aradur [®] 2954	100 – 140	60	7.8 (0.93)	35 ¹⁹	35 – 45 ²⁰	≤ 2	Cycloaliphatic amine for use in combination with modified liquid epoxy resins for reaction transfer molding, filament winding, pultrusion and wet lay up applications.
Aradur [®] 2963	30 – 70	85	8.3 (0.99)	45	35	≤ 2	Used for mortars and floor repair systems, sewage treatment plants, commercial and industrial flooring.
Aradur [®] 2964	40 – 70	93	8.3 (0.99)	50	32	≤ 2	Used for mortars and floor repair systems, sewage treatment plants, commercial and industrial flooring.
Aradur [®] 2965	100 – 300	94	8.8 (1.05)	50	21	≤ 4	Very low viscosity curing agent for floorings with good chemical resistance and surface properties. Excellent blushing resistance even at low temperatures.
Aradur [®] 2973	900 – 1,400	85	9.0 (1.08)	45	37	≤ 7	For the formulation of chemical-resistant, heavy-duty coatings and flooring systems.

¹ At 25°C, 40% in butylcarbitol

⁵ Gardner Holdt Viscosity

¹⁸ With Araldite[®] GY 6010 Liquid Epoxy Resin

¹⁹ With Araldite[®] LY 1564 Epoxy Resin

²⁰ With Araldite[®] LY 1564 Epoxy Resin at 80°C

Section 12 Epoxy Curing Agents *(continued)*

12.2 – Cycloaliphatic Amine Based *(continued)*

Product	Viscosity at 25°C, [cP]	H+ Active Equivalent [g/eq]	Density at 25°C [lb/gal, (g/cm ³)]	Typical Mix ratio ¹⁸ [g/100g]	Gel Time ¹⁸ 100g at 23°C [minutes]	Color ¹ [Gardner]	Product Description
Aradur [®] 2975	350 – 750	115	8.4 (1.01)	60	60	≤ 1	Used for solvent-free coatings and floorings. Good chemical resistance and surface properties.
Aradur [®] 2978-1	125 – 425	115	8.5 (1.02)	60	~70	< 60 (APHA)	Low-color, ambient-cure, low-viscosity curing agent designed for the formulation of coating and flooring systems with long working time, high gloss and good color retention.
Aradur [®] 2994	30 – 80	87.5	8.5 (1.02)	46	22	≤ 2	Low-viscosity, high-reactivity curing agent for use as an accelerator for slower curing amine hardeners in flooring applications.
Aradur [®] 3208	80 – 150	75	8.4 (1.01)	40	13	≤ 3	Low-viscosity, high-reactivity curing agent providing excellent surface properties when cured at low temperatures. For use in crack injection systems or as an accelerator for other amine hardeners.
Aradur [®] 3210	70 – 145	72	8.4 (1.01)	38	23	≤ 3	Low-viscosity curing agent for use in coating and flooring systems requiring fast cure, and good chemical resistance.
Aradur [®] 3218	130 – 210	75	8.4 (1.01)	40	19	≤ 2	Rapid-curing, low-viscosity curing agent with good resistance to carbarnation at low temperatures and high humidity.
Aradur [®] 3246	800 – 1,200	57	9.3 (1.11)	31	16	≤ 6	Low-viscosity, modified polyamine curing agent designed for rapid curing epoxy systems. In combination with a liquid epoxy resin, such as Araldite [®] GY 6010, this hardener provides high chemical resistance, especially to organic acids.
Aradur [®] 3253	200 – 260	95	8.5 (1.02)	50	43	≤ 1	Ambient-cure, low-viscosity curing agent designed for the formulation of flooring systems with good resistance to amine blush, water spotting and with good relative color stability.
Aradur [®] 3374	50 – 75	92	8.3 (0.99)	50	42	≤ 1	Low-viscosity, low-color curing agent for use in coatings and flooring systems requiring good surface appearance properties and good color stability.

¹ At 25°C, 40% in butylcarbitol

¹⁸ With Araldite[®] GY 6010 Liquid Epoxy Resin

Section 12 Epoxy Curing Agents *(continued)*

12.3 – Amidoamine and Polyamide Based

Product	Viscosity at 25°C, [cP]	H+ Active Equivalent [g/eq]	Density at 25°C [lb/gal, (g/cm ³)]	Typical Mix ratio ¹⁸ [g/100g]	Gel Time ¹⁸ 100g at 23°C [minutes]	Color [Gardner]	Product Description
Aradur [®] 115-2	50,000 – 70,000 ²⁵	115 – 240	8.1 (0.97)	60 – 100	600 at 80 phr	≤ 8	Standard, high-molecular weight polyamide typically used in combination with “type 1” epoxy resins for industrial maintenance and trade sales coatings.
Aradur [®] 115-2 X-70	800 – 2,300	160 – 340	7.8 (0.93)	60 – 100	200 at 100 phr	≤ 8	Solution of Aradur [®] 115-2 supplied at 70 wt.% non-volatiles in xylene.
Aradur [®] 125-2	8,000 – 12,000 ²⁵	100 – 150	8.1 (0.97)	50 – 80	148 at 65 phr	≤ 8	Standard polyamide for use with “type 1” epoxy resins for industrial maintenance and trade sales coatings.
Aradur [®] 140-2	3000 – 6000 ²⁵	70 – 115	8.1 (0.97)	35 – 60	303 at 50 phr	≤ 11	Medium-viscosity, standard polyamidoamine suitable for high-solids or solvent-free industrial and general purpose coatings.
Aradur [®] 283	Z1 – Z4 ⁵	133	8.3 (0.99)	70 – 100	226 at 70 phr	≤ 8	Modified polyamidoamine suitable for flooring and high-solids marine and maintenance primers and coatings.
Aradur [®] 350	100 – 400	95	7.9 (0.94)	50	~145	≤ 10	Low-viscosity polyamidoimidazoline. Good adhesion to concrete.
Aradur [®] 360	300 – 500	134	7.8 (0.93)	60 – 80	207 at 80 phr	≤ 8	Modified polyamidoamine suitable for the formulation of high-solids or solvent-free coatings and marine and maintenance primers.
Aradur [®] 450	700 – 2,000	115	8.4 (1.01)	60	69	≤ 10	Formulated polyamidoamine curing agent designed specifically for the formulation of two-component epoxy primers for damp or wet concrete. Also suitable for metal substrates.
Aradur [®] 450 S	450 – 1,400	115	8.6 (1.03)	60	39	≤ 10	Faster curing version of Aradur [®] 450.
Aradur [®] 955-2	500 – 900	65	8.2 (0.98)	35	45	≤ 9	Modified polyamidoamine for use in coatings, flooring, potting and wet lay-up applications. Curing under high relative humidity is possible.

⁵ Gardner Holdt Viscosity

¹⁸ With Araldite[®] GY 6010 Liquid Epoxy Resin

²⁵ At 40°C

Section 12

Epoxy Curing Agents *(continued)*

12.3 – Amidoamine and Polyamide Based *(continued)*

Product	Viscosity at 25°C, [cP]	H+ Active Equivalent [g/eq]	Density at 25°C [lb/gal, (g/cm ³)]	Typical Mix ratio ¹⁸ [g/100g]	Gel Time ¹⁸ 100g at 23°C [minutes]	Color [Gardner]	Product Description
Aradur® 3376	90 – 140	112	8.3 (0.99)	54 – 60	105	≤ 8	Low viscosity polyamidoamine curing agent designed for the formulation of solvent free flooring and coating systems.
Aradur® 3282	900 – 1,900	115	8.4 (1.01)	60	104	≤ 10	Benzyl alcohol free and nonyl phenol free, medium viscosity hardener for the formulation of surface tolerant primers for metal or concrete substrates.
Aradur® 9130	250 – 500	95	8.3 (0.99)	50	226	≤ 9	Low-viscosity polyamidoamine for use in flooring and coatings.
Aradur® 9140	300 – 500	92	7.9 (0.95)	50	139	≤ 9	Low-viscosity polyamidoamine for use in flooring and coatings.

12.4 – Phenalkamine and Mannich Based

Product	Viscosity at 25°C, [cP]	H+ Active Equivalent [g/eq]	Density at 25°C [lb/gal, (g/cm ³)]	Typical Mix ratio ¹⁸ [g/100g]	Gel Time ¹⁸ 100g at 23°C [minutes]	Color [Gardner]	Product Description
Aradur® 14	400 – 600	75	8.3 (0.99)	40	16	≤ 5	Mannich-based. For use in solvent-free coatings and epoxy mortars. Low sensitivity to moisture. High reactivity.
Aradur® 3441	10,000 – 35,000	130	8.3 (0.99)	60 – 80	54 at 60 phr 48 at 70 phr 37 at 80 phr	≤ 17	Suitable for low-temperature cure marine and maintenance coatings.
Aradur® 3442	1,000 – 5,000	125	8.2 (0.98)	55 – 70	82 at 55 phr 37 at 70 phr	≤ 17	Mannich-based curing agent derived from cashew nut shells. Good for use in marine and maintenance coatings.

¹⁸ With Araldite® GY 6010 Liquid Epoxy Resin

Section 12

Epoxy Curing Agents *(continued)*

12.5 – Aromatic Amine Based

Product	Viscosity at 25°C, [cP]	H+ Active Equivalent [g/eq]	Melting Point [°C]	Product Description
Aradur® 976-1	N/A	63	176 – 180	4,4'-diaminodiphenyl sulfone (DDS). Excellent high temperature and chemical resistance. For use in adhesives, PWB laminates, prepregs, composites applications. (Gel time with Araldite® GY 6010, 3 hours at 100°C).
Aradur® 5200	50 – 350	45	N/A	Low-viscosity aromatic amine for adhesive, filament winding and RTM applications. (Gel time with Araldite® GY 6010, 8 hours at 35°C).
Aradur® 9664-1	N/A	63	176 – 180	Micronized 4,4'-diaminodiphenyl sulfone (DDS). Excellent high temperature and chemical resistance. For use in adhesives, PWB laminates, prepregs, composites, powder coatings applications.
Aradur® 9719-1	N/A	63	165 – 175	Micronized 3,3'-diaminodiphenyl sulfone (DDS). Excellent high temperature and chemical resistance. For use in adhesives, PWB laminates, prepregs, composites applications.

12.6 – Anhydride

Product	Viscosity at 25°C, [cP]	Molecular Weight	Specific Gravity at 25°C [lb/gal, (g/cm)]	Product Description
Aradur® HY 906	175 – 275	178	10.3 (1.23)	Nadic methyl anhydride for high Tg composites and potting applications.
Aradur® 917	50 – 80	166	10.1 (1.21)	Methyl tetrahydrophthalic anhydride for high-temperature, industrial composite applications for filament winding, RTM and pultrusion.
Aradur® HT 907	40 – 50 at 40°C	154	1.36 – 1.40	Hexahydrophthalic anhydride for medium – and high-voltage electrical casting systems.
Aradur® HY 1102	70 at 20 °C	168	1.16	Methyl hexahydrophthalic anhydride for high Tg, medium – and high-voltage electrical impregnation systems.
Aradur® HY 1235	70 – 80	N/A	1.18 – 1.20	Anhydride-based hardener designed for the formulation of medium – to high-voltage electrical insulating systems for use under severe climatic conditions.

Section 12 Epoxy Curing Agents *(continued)*

12.7 – Waterborne

Product	Viscosity at 25°C, [cP]	H+ Active Equivalent ⁶ [g/eq]	Density at 25°C [lb/gal, (g/cm ³)]	Typical Mix ratio ¹⁸ [g/100g]	Color [Gardner]	Solids Content [%]	Product Description
Aradur® 39	12,000 – 20,000	335	8.9 (1.07)	150 – 200	≤ 5	49 – 51	Polyamine adduct in water. For use in VOC-free coatings and flooring curing at low temperatures. Fast dry and cure.
Aradur® 340	18,000 – 23,000	210	8.7 (1.04)	110	≤ 12	49 – 51	Polyamidoamine adduct in water. For use in primers and topcoats for concrete and metals. Good flexibility.
Aradur® 3805	Z – Z4 ⁵	270	9 (1.08)	144	≤ 9	59 – 61	Waterborne polyamine hardener supplied at 60% solids in a mixture of 2-propoxyethanol, acetic acid and water. For use in the formulation of two-component waterborne coatings for concrete and metal substrates.
Aradur® 3984	5,000 – 15,000	150	8.83 (1.06)	75 – 85	≤ 8	78 – 82	Polyamine adduct in water. For use in the formulation of zero or low VOC two-component waterborne epoxy coatings and flooring systems. Provides excellent flexibility when formulated with a “1-type” solid epoxy dispersion, such as Araldite® PZ 3901. Good compatibility with colorants. Good chemical resistance.
Aradur® 3985	1,000 – 6,000	265	8.74 (1.05)	140	≤ 6	53 – 57	Polyamine adduct in water. For use in the formulation of zero VOC two-component waterborne epoxy coating and flooring systems with a visible end of pot life and thick films.
Aradur® 3986	15,000 – 35,000	415	8.82 (1.06)	222	≤ 6	39 – 41	Modified Polyamine adduct in water. For use in the formulation of fast-curing, two-component waterborne epoxy systems with good yellowing resistance. Provides excellent anti-corrosion properties when formulated with a “1-type” solid epoxy dispersion, such as Araldite® PZ 3961-1.

⁵ Gardner Holdt Viscosity

⁶ As supplied

¹⁸ With Araldite® GY 6010 Liquid Epoxy Resin

Section 12
Epoxy Curing Agents *(continued)*

12.8 – Waterborne Applications

Product	Concrete				Thick Film			Metal	
	Standard Primer	Paint	Clear Sealer	DIY Garage Floor	Thermal Shock Flooring	Self-Leveling	Tile Grout/ Adhesive	Primer	Direct-to-Metal
Aradur® 39	■	■	■	■					
Aradur® 340	■						■	■	■
Aradur® 3805	■	■	■	■					
Aradur® 3984	■	■	■					■	■
Aradur® 3985	■				■	■	■		
Aradur® 3986								■	■

■ Primary recommendation ■ Alternative recommendation

Section 12 Epoxy Curing Agents *(continued)*

12.9 – Miscellaneous

Product	Viscosity at 25°C, [cP]	Gel Time 100g at 23°C [minutes]	Melting Point [°C]	Cure Schedule	Product Description
Aradur® 940	250,000 – 600,000	170 ¹⁸	N/A	N/A	Dispersion of Aradur® 9506 in liquid bisphenol-A epoxy resin. Six month latency when stored at 20°C. Excellent adhesion, good mechanical properties, highly reactive at 100°C. For use in one pack adhesives, tooling, vinyl plastisols and dipping compounds.
Aradur® 949-3	100 – 200	N/A	N/A	20 min. at 200 °C	Etherified resole based on bisphenol-A solution supplied as at 55 ± 1.5 % non-volatiles in n-butanol. Suitable for the formulation of chemical and solvent resistant heat cured coatings. Also suitable for the formulation of FDA compliant coatings.
Aradur® 2844	N/A	5 – 10 ²¹	139 – 143	N/A	O-tolyl biguanide. For adhesive and powder coating applications.
Aradur® 3380-1	N/A	18 ²¹	95 – 110	20 min. at 170 °C, 5 min. at 220 °C	Anhydride-based crosslinker for use in FDA-compliant coating applications.
Aradur® 9506	N/A	35 ²²	N/A	30 min. at 135 °C	Latent modified polyamide hardener. Excellent shelf life with a six-month latency when stored at 20°C. Excellent adhesion, good mechanical properties, highly reactive at 100°C. For use in one pack adhesive, tooling, vinyl plastisols, dipping compounds.
Aradur® 9690-1	700 – 1,200 at 150°C	50 ²³	85 – 95	5 min at 195°C + 15 min at 200°C	O-cresol novolac hardener. For use in high-temperature resistant molding compounds and powder coatings.
Aradur® 3086	N/A	12 – 19 ²¹	84 – 94	N/A	Phenolic hardener / accelerator for low-temperature cure or fast-cure epoxy powder coatings.
Aradur® 3123	N/A	1 – 5 ²¹	180 – 250	N/A	Heterocyclic amine. May be used as a latent accelerator for anhydride and amine-cured epoxy systems or as a latent catalytic curing agent for epoxy resins.

¹⁸ With Araldite® GY 6010 Liquid Epoxy Resin

²¹ With Araldite® GT 7013 Epoxy Resin

²² With Araldite® LY 1556 Epoxy Resin

²³ With Araldite® ECN 1299 Epoxy Resin

Section 13 Curing Accelerators

13.1 – Liquid Accelerators

Product	Viscosity at 25°C, [cP]	H+ Active Equivalent [g/eq]	Typical Mix ratio ¹⁸ [g/100g]	Product Description
Accelerator DY 062	< 10	N/A	0.5 – 10	Benzyl dimethyl amine (BDMA). Compatible with anhydride, polyamide and polyamine hardeners.
Accelerator DY 070	< 50	N/A	N/A	Heterocyclic amine. May be used with anhydride hardeners to improve their reactivity in filament winding, pultrusion and RTM systems.
Accelerator DY 073-1	5 – 15	N/A	N/A	Latent amine-based accelerator for use in anhydride cured casting and impregnating epoxy systems.
Accelerator 960-1	120 – 150	N/A	0.5 – 10	Tertiary amine accelerator. For use as a curing accelerator for ambient cure epoxy systems.
Accelerator 2950	2,000 – 6,000	75	39	Accelerator and co-hardener. Compatible with a wide range of epoxy hardeners for the formulation of fast-cure and low-temperature cure epoxy coating and flooring systems.
Accelerator 3130	10 – 100	N/A	1 – 3	For use in ambient-cured epoxy systems to speed up the cure at ambient or low temperatures. Not compatible with all epoxy hardeners.

¹⁸ With Araldite® GY 6010 Liquid Epoxy Resin

Section 13 Curing Accelerators *(continued)*

13.2 – Solid Accelerators

Product	Melting Point [°C]	H+ Active Equivalent [g/eq]	Typical Mix ratio ¹⁸ [g/100g]	Product Description
Aradur® 835	N/A	~200	15	Solid aliphatic amine adduct. For use in low-temperature cure or fast-cure powder coatings. Suitable for the formulation of FDA-compliant coatings. Viscosity: 600 – 1,200 cps at 25°C. ²⁶
Aradur® 3088	85 – 105	-	1 – 4	Solid epoxy amine adduct. For use in powder coating applications either as a catalytic crosslinker or as an accelerator for other epoxy hardeners such as dicyandiamide.
Accelerator DT 3126-2	100 – 110	-	1 – 4	Accelerator for epoxy-polyester hybrid and polyester-TGIC powder coatings. Suggested use level: 1 to 4 wt. % for hybrids and 1 to 2 wt. % for TGIC based systems.
Aradur® 3261-1	105 – 115	-	5 – 8	Solid epoxy amine adduct with high reactivity for low-temperature or fast-cure powder coatings. May be used as an accelerator or as a catalytic curing agent for epoxy resins.
Accelerator DY 9577	25 – 31	-	0.1 to 5.0	Boron trichloride amine complex. Good latency up to 80°C. High reactivity above 120°C. For use in casting, encapsulation, filament winding, pultrusion, molding, and electrical tape applications. 0.1 to 1.0 PHR when used as an accelerator or 1.0 to 5.0 PHR when used as a latent catalytic curing agent.

¹⁸ With Araldite® GY 6010 Liquid Epoxy Resin

²⁶ 40% solution in n-butanol/xylene (50/50)

Section 14 Matting Agents

Product	Melting Point [°C]	H+ Active Equivalent [g/eq]	Product Description
Matting Agent DT 125-1	110 – 125	N/A	Color stable matting agent for semi gloss epoxy-polyester hybrids and polyester-TGIC powder coating formulations. Recommended use level is 1 to 3 wt.% on binder. Suitable for gloss reduction down to 50%.
Matting Agent DT 3329-1	105 – 117	N/A	Color stable matting agent for semi gloss epoxy-polyester hybrids and polyester-TGIC powder coating formulations. Suitable for gloss reduction down to 30%. Ideal for white and light colors.
Matting Agent DT 3360	120 – 135	N/A	Color stable, wax-free matting agent for semi gloss epoxy-polyester hybrids powder coating formulations. Suitable for gloss reduction down to 15%. Suitable for both light and dark colors.

Section 15 Miscellaneous Products

Product	Epoxide Eq. Weight [EEW, g/eq]	Specific Gravity at 25°C [lb/gal, (g/cm)]	Product Description
Modifier DW 1765	625 – 833	7.5 (0.89)	Additive for solvent-free ambient cured epoxy systems. Effective at low concentration to greatly reduce or eliminate blushing and exudation. May also help improve early water spotting resistance. Not suitable for solvent-borne systems. Suggested use level 0.2 to 2.0 wt.% on the epoxy resin.

Product Index

Alphabetical

Product Name	Product Family	Page
Accelerator 2950	Curing Accelerators	.28
Accelerator 3130	Curing Accelerators	.28
Accelerator 960-1	Curing Accelerators	.28
Accelerator DT 300	Benzoxazine Modifiers	.18
Accelerator DT 310	Benzoxazine Modifiers	.18
Accelerator DT 3126-2	Curing Accelerators	.29
Accelerator DY 062	Curing Accelerators	.28
Accelerator DY 070	Curing Accelerators	.28
Accelerator DY 073-1	Curing Accelerators	.28
Accelerator DY 9577	Curing Accelerators	.29
Aradur® 115-2	Amidoamine and Polyamide Curing Agents	.22
Aradur® 115-2 X 70	Amidoamine and Polyamide Curing Agents	.22
Aradur® 125-2	Amidoamine and Polyamide Curing Agents	.22
Aradur® 14	Phenalkamine and Mannich Based Curing Agents	.23
Aradur® 140-2	Amidoamine and Polyamide Curing Agents	.22
Aradur® 21	Aliphatic Amines Curing Agents	.19
Aradur® 22	Cycloaliphatic Amine Curing Agents	.20
Aradur® 265-1	Cycloaliphatic Amine Curing Agents	.20
Aradur® 283	Amidoamine and Polyamide Curing Agents	.22
Aradur® 2844	Miscellaneous Curing Agents	.27
Aradur® 2954	Cycloaliphatic Amine Curing Agents	.20
Aradur® 2963	Cycloaliphatic Amine Curing Agents	.20
Aradur® 2964	Cycloaliphatic Amine Curing Agents	.20
Aradur® 2965	Cycloaliphatic Amine Curing Agents	.20
Aradur® 2973	Cycloaliphatic Amine Curing Agents	.20
Aradur® 2975	Cycloaliphatic Amine Curing Agents	.21
Aradur® 2978-1	Cycloaliphatic Amine Curing Agents	.21
Aradur® 2994	Cycloaliphatic Amine Curing Agents	.21
Aradur® 3086	Miscellaneous Amine Curing Agents	.27
Aradur® 3088	Curing Accelerators	.29

Product Name	Product Family	Page
Aradur® 3123	Miscellaneous Curing Agents	.27
Aradur® 3208	Cycloaliphatic Amine Curing Agents	.21
Aradur® 3210	Cycloaliphatic Amine Curing Agents	.21
Aradur® 3218	Cycloaliphatic Amine Curing Agents	.21
Aradur® 3227	Aliphatic Amines Curing Agents	.19
Aradur® 3246	Cycloaliphatic Amine Curing Agents	.21
Aradur® 3253	Cycloaliphatic Amine Curing Agents	.21
Aradur® 3261-1	Curing Accelerators	.29
Aradur® 3275	Aliphatic Amines Curing Agents	.19
Aradur® 3282	Amidoamine and Polyamide Based	.23
Aradur® 3374	Cycloaliphatic Amine Curing Agents	.21
Aradur® 3376	Amidoamine and Polyamide Curing Agents	.22
Aradur® 3380-1	Miscellaneous Curing Agents	.27
Aradur® 340	Waterborne Curing Agents	.25
Aradur® 3441	Phenalkamine and Mannich Based Curing Agents	.23
Aradur® 350	Amidoamine and Polyamide Curing Agents	.22
Aradur® 355	Cycloaliphatic Amine Curing Agents	.20
Aradur® 356	Aliphatic Amines Curing Agents	.19
Aradur® 360	Amidoamine and Polyamide Curing Agents	.22
Aradur® 3805	Waterborne Curing Agents	.25
Aradur® 39	Waterborne Curing Agents	.25
Aradur® 3984	Waterborne Curing Agents	.25
Aradur® 3985	Waterborne Curing Agents	.25
Aradur® 3986	Waterborne Curing Agents	.25
Aradur® 42	Cycloaliphatic Amine Curing Agents	.20
Aradur® 450	Amidoamine and Polyamide Curing Agents	.22
Aradur® 450 S	Amidoamine and Polyamide Curing Agents	.22
Aradur® 48 S	Cycloaliphatic Amine Curing Agents	.20
Aradur® 5200	Aromatic Amines Curing Agents	.24
Aradur® 70	Aliphatic Amines Curing Agents	.19

Product Index *(continued)*

Alphabetical

Product Name	Product Family	Page	Product Name	Product Family	Page
Aradur® 75	Aliphatic Amines Curing Agents	19	Araldite® DY-C	Epoxy Reactive Diluent	14
Aradur® 76	Aliphatic Amines Curing Agents	19	Araldite® DY-CNO	Epoxy Reactive Diluent	14
Aradur® 77	Aliphatic Amines Curing Agents	19	Araldite® DY-D	Epoxy Reactive Diluent	14
Aradur® 835	Curing Accelerators	29	Araldite® DY-E	Epoxy Reactive Diluent	14
Aradur® 837	Aliphatic Amines Curing Agents	19	Araldite® DY-J	Epoxy Reactive Diluent	14
Aradur® 847	Cycloaliphatic Amine Curing Agents	20	Araldite® DY-K	Epoxy Reactive Diluent	14
Aradur HY 906	Anhydride Curing Agents	24	Araldite® DY-N	Epoxy Reactive Diluent	14
Aradur® 9130	Amidoamine and Polyamide Curing Agents	23	Araldite® DY-P	Epoxy Reactive Diluent	14
Aradur® 9140	Amidoamine and Polyamide Curing Agents	23	Araldite® DY-T	Epoxy Reactive Diluent	14
Aradur® 917	Anhydride Curing Agents	24	Araldite® ECN 1273	Epoxy Cresol Novolacs	9
Aradur® 940	Miscellaneous Curing Agents	27	Araldite® ECN 1280	Epoxy Cresol Novolacs	9
Aradur® 943	Aliphatic Amines Curing Agents	19	Araldite® ECN 1299	Epoxy Cresol Novolacs	9
Aradur® 949-3	Miscellaneous Curing Agents	27	Araldite® ECN 9511	Epoxy Cresol Novolacs	9
Aradur® 9506	Miscellaneous Curing Agents	27	Araldite® EPN 1138	Epoxy Phenol Novolacs	8
Aradur® 955-2	Amidoamine and Polyamide Curing Agents	22	Araldite® EPN 1138 A-85	Epoxy Phenol Novolacs	8
Aradur® 956-2	Aliphatic Amines Curing Agents	19	Araldite® EPN 1138 MAK-80	Epoxy Phenol Novolacs	8
Aradur® 9664-1	Aromatic Amines Curing Agents	24	Araldite® EPN 1138 N-85	Epoxy Phenol Novolacs	8
Aradur® 9690-1	Miscellaneous Curing Agents	27	Araldite® EPN 1139	Epoxy Phenol Novolacs	8
Aradur® 9719-1	Aromatic Amines Curing Agents	24	Araldite® EPN 1179	Epoxy Phenol Novolacs	8
Aradur® 976-1	Aromatic Amines Curing Agents	24	Araldite® EPN 1180	Epoxy Phenol Novolacs	8
Aradur® HT 907	Anhydride Curing Agents	24	Araldite® EPN 1180 A-85	Epoxy Phenol Novolacs	8
Aradur® HY 1102	Anhydride Curing Agents	24	Araldite® EPN 1180 X-80	Epoxy Phenol Novolacs	8
Aradur® HY 1235	Anhydride Curing Agents	24	Araldite® EPN 9850	Epoxy Phenol Novolacs	8
Araldite® CY 179-1	Cycloaliphatic Epoxy Resins	12	Araldite® EPN 9880	Epoxy Phenol Novolacs	9
Araldite® CY 184	Cycloaliphatic Epoxy Resins	12	Araldite® EPN 9881	Epoxy Phenol Novolacs	9
Araldite® CY 192-1	Cycloaliphatic Epoxy Resins	12	Araldite® GT 6063	Unmodified Solid Epoxy Resins	3
Araldite® CY 5622	Cycloaliphatic Epoxy Resins	12	Araldite® GT 6084	Unmodified Solid Epoxy Resins	3
Araldite® CY 8043	Brominated Epoxy Resins	12	Araldite® GT 6097	Unmodified Solid Epoxy Resins	4
Araldite® CY 9729	Cycloaliphatic Epoxy Resins	12	Araldite® GT 6243	Unmodified Solid Epoxy Resins	4
Araldite® DY 026	Epoxy Reactive Diluent	14	Araldite® GT 6248	Unmodified Solid Epoxy Resins	4
Araldite® DY 3601	Epoxy Reactive Diluent	14	Araldite® GT 6259	Modified Solid Epoxy Resins	5

Product Index *(continued)*

Alphabetical

Product Name	Product Family	Page	Product Name	Product Family	Page
Araldite® GT 7013	Unmodified Solid Epoxy Resins	.4	Araldite® GY 9667	Modified Liquid Epoxy Resins	.3
Araldite® GT 7014	Unmodified Solid Epoxy Resins	.4	Araldite® GY 9820 EPN	Bisphenol-F Based Epoxy Resins	.7
Araldite® GT 7071	Unmodified Solid Epoxy Resins	.4	Araldite® GZ 471 X-75	Epoxy Resin Solutions	.5
Araldite® GT 7072	Unmodified Solid Epoxy Resins	.4	Araldite® GZ 488 N-40	Epoxy Resin Solutions	.5
Araldite® GT 7074	Unmodified Solid Epoxy Resins	.4	Araldite® GZ 488 V-32	Epoxy Resin Solutions	.5
Araldite® GT 7097	Unmodified Solid Epoxy Resins	.4	Araldite® GZ 540 X-90	Epoxy Resin Solutions	.6
Araldite® GT 7220	Modified Solid Epoxy Resins	.5	Araldite® GZ 571 KX-75	Epoxy Resin Solutions	.6
Araldite® GT 7255	Modified Solid Epoxy Resins	.5	Araldite® GZ 571 T-75	Epoxy Resin Solutions	.6
Araldite® GT 9013	Unmodified Solid Epoxy Resins	.4	Araldite® GZ 597 KT-55	Epoxy Resin Solutions	.6
Araldite® GT 9545	Unmodified Solid Epoxy Resins	.4	Araldite® GZ 6097 PM-55	Epoxy Resin Solutions	.6
Araldite® GT 9654	Unmodified Solid Epoxy Resins	.4	Araldite® GZ 7071 F-65	Epoxy Resin Solutions	.6
Araldite® GY 2600	Unmodified Liquid Epoxy Resins	.2	Araldite® GZ 7071 OX-65	Epoxy Resin Solutions	.6
Araldite® GY 281	Bisphenol-F Based Epoxy Resins	.7	Araldite® GZ 7071 PM-75	Epoxy Resin Solutions	.6
Araldite® GY 282	Bisphenol-F Based Epoxy Resins	.7	Araldite® GZ 7488 V-40	Epoxy Resin Solutions	.6
Araldite® GY 285	Bisphenol-F Based Epoxy Resins	.7	Araldite® GZ 9625 W-90	Epoxy Resin Solutions	.6
Araldite® GY 289	Epoxy Phenol Novolacs	.9	Araldite® GZ 9749 OX 65	Epoxy Resin Solutions	.6
Araldite® GY 505	Modified Liquid Epoxy Resins	.2	Araldite® LT 8049	Brominated Epoxy Resins	.12
Araldite® GY 506	Modified Liquid Epoxy Resins	.2	Araldite® LY 1564	Modified Liquid Epoxy Resins	.3
Araldite® GY 507	Modified Liquid Epoxy Resins	.2	Araldite® LY 1556	Unmodified Liquid Epoxy Resins	.2
Araldite® GY 508	Modified Liquid Epoxy Resins	.2	Araldite® LY 1568	Modified Liquid Epoxy Resins	.3
Araldite® GY 509	Modified Liquid Epoxy Resins	.2	Araldite® LZ 8001 A-80	Brominated Epoxy Resins	.12
Araldite® GY 512	Modified Liquid Epoxy Resins	.2	Araldite® LZ 8280 N 70	Benzoxazine Thermoset Resins	.18
Araldite® GY 6004	Modified Liquid Epoxy Resins	.2	Araldite® LZ 8280 N 75	Benzoxazine Thermoset Resins	.18
Araldite® GY 6005	Modified Liquid Epoxy Resins	.3	Araldite® MT 35700	Benzoxazine Thermoset Resins	.18
Araldite® GY 6008	Unmodified Liquid Epoxy Resins	.2	Araldite® MT 35710 FST	Benzoxazine Thermoset Resins	.18
Araldite® GY 6010	Unmodified Liquid Epoxy Resins	.2	Araldite® MY 0500	Glycidyl Amines Based Resins	.10
Araldite® GY 6020	Unmodified Liquid Epoxy Resins	.2	Araldite® MY 0510	Glycidyl Amines Based Resins	.10
Araldite® GY 9513	Modified Liquid Epoxy Resins	.3	Araldite® MY 0600	Glycidyl Amines Based Resins	.10
Araldite® GY 9580	Modified Liquid Epoxy Resins	.3	Araldite® MY 0610	Glycidyl Amines Based Resins	.10
Araldite® GY 9613	Modified Liquid Epoxy Resins	.3	Araldite® MY 0816	Miscellaneous Multifunctional Epoxy Resins	.11
Araldite® GY 9615	Modified Liquid Epoxy Resins	.3	Araldite® MY 720	Glycidyl Amines Based Resins	.10

Product Index *(continued)*

Alphabetical

Product Name	Product Family	Page
Araldite® MY 721	Glycidyl Amines Based Resins	10
Araldite® MY 790-1	Unmodified Liquid Epoxy Resins	2
Araldite® MY 9512	Glycidyl Amines Based Resins	10
Araldite® MY 9612	Glycidyl Amines Based Resins	10
Araldite® MY 9634	Glycidyl Amines Based Resins	10
Araldite® MY 9655	Glycidyl Amines Based Resins	10
Araldite® MY 9663	Glycidyl Amines Based Resins	10
Araldite® PT 810	Miscellaneous Multifunctional Epoxy Resins	11
Araldite® PY 302-2	Bisphenol-F Based Epoxy Resins	7
Araldite® PY 306	Bisphenol-F Based Epoxy Resins	7
Araldite® PY 307-1	Epoxy Phenol Novolacs	9
Araldite® PY 313	Bisphenol-F Based Epoxy Resins	7
Araldite® PY 4122	Toughened / Flexibilized Resins	15
Araldite® PZ 323	Waterborne Epoxy Resins	13
Araldite® PZ 3901	Waterborne Epoxy Resins	13
Araldite® PZ 3903-2	Waterborne Epoxy Resins	13
Araldite® PZ 3961-1	Waterborne Epoxy Resins	13
AroCy® L-10	Cyanate Ester Resins	15
AroCy® XU 366	Cyanate Ester Resins	15
AroCy® XU 371	Cyanate Ester Resins	15
AroCy® XU 378	Cyanate Ester Resins	15
Matting Agent DT 125-1	Matting Agents	30
Matting Agent DT 3329-1	Matting Agents	30
Matting Agent DT 3360	Matting Agents	30
Flexibilizer DY 965	Toughened / Flexibilized Resins	15

Product Name	Product Family	Page
Kerimid® 701 A A-70	Polyimide Resin Solutions	16
Kerimid® 701 A N-70	Polyimide Resin Solutions	16
Kerimid® 701 C	Polyimide Resin Solutions	16
Kerimid® 701 D	Polyimide Resin Solutions	16
Kerimid® 701-1 B	Polyimide Resin Solutions	16
Kerimid® 8292 N-75	Polyimide Resin Solutions	16
Kerimid® 8292 NPM 60	Polyimide Resin Solutions	16
Matrimid® 2292	Polyimide Resin Solutions	17
Matrimid® 5218	Polyimide Resin Solutions	17
Matrimid® 5292 A-2	Polyimide Resin Solutions	17
Matrimid® 5292 B	Polyimide Resin Solutions	17
Matrimid® 9725	Polyimide Resin Solutions	17
Modifier DW 1765	Miscellaneous Products	31
Tactix® 123	Unmodified Liquid Epoxy Resins	2
Tactix® 556	Miscellaneous Multifunctional Epoxy Resins	11
Tactix® 695-1	Toughened / Flexibilized Resins	15
Tactix® 742	Miscellaneous Multifunctional Epoxy Resins	11
Tactix® 756	Miscellaneous Multifunctional Epoxy Resins	11
XU 3508	Toughened / Flexibilized Resins	15
XU 35500	Benzoxazine Thermoset Resins	18
XU 35610	Benzoxazine Thermoset Resins	18
XU 35910	Benzoxazine Thermoset Resins	18

Global Presence – 13 Manufacturing Sites



HUNTSMAN

Enriching lives through innovation

The products contained in this selector guide provide the user with our generally recommended products. We invite you to contact your account manager or distributor for more information. Associates at Huntsman Advanced Materials are also available to offer technical assistance or answer any questions you may have regarding our products.

Please note that not all products are produced in North America.

For more information

www.huntsman.com/advanced_materials
advanced_materialsathuntsman.com

Americas: Huntsman Advanced Materials Americas / 10003 Woodloch Forest Drive / The Woodlands / Texas 77380 / USA / Tel. +1 888 564 9318 / Fax +1 281 719 4047

Europe/Africa: Huntsman Advanced Materials (Switzerland) GmbH / Klybeckstrasse 200 / P.O. Box 4002 / Basel / Switzerland / Tel. +41 61 299 11 11 / Fax +41 61 299 11 12

India/Middle East: Huntsman Advanced Materials (India) Pvt. Ltd. / 5th Floor, Bldg. No. 10 / Solitaire Corporate Park, 167 / Guru Hargovindji Marg, Chakal, Andheri (East) / Mumbai – 400 093 / India / Tel. +91 22 4095 1556-60 / Fax + 91 22 4095 1300/1400/1500

Asia/Pacific: Huntsman Advanced Materials (Guangdong) Co., Ltd. / Rooms 4903 – 4906, Maxdo Center / 8 Xing Yi Road / Shanghai, 200336 / P.R. China / Tel. +86 21 2208 7588 / Fax +86 21 2208 7511 / Customer Free Call Inquiry +86 20 8484 5000

Important Legal Notice

Araldite, Aradur, AroCy, Kerimid, Matrimid, Rhodafal and Tactix are registered trademarks of Huntsman Corporation or an affiliate thereof in one or more, but not all, countries. Sales of the product described herein (“Product”) are subject to the general terms and conditions of sale of either Huntsman Advanced Materials LLC, or its appropriate affiliate including without limitation Huntsman Advanced Materials (Europe) BVBA, Huntsman Advanced Materials Americas Inc., or Huntsman Advanced Materials (Hong Kong) Ltd. or Huntsman Advanced Materials (Guangdong) Co., Ltd. (“Huntsman”). The following supersedes Buyer’s documents. While the information and recommendations included in this publication are, to the best of Huntsman’s knowledge, accurate as of the date of publication, NOTHING CONTAINED HEREIN IS TO BE CONSTRUED AS A REPRESENTATION OR WARRANTY OF ANY KIND, EXPRESS OR IMPLIED, INCLUDING BUT NOT LIMITED TO ANY WARRANTY OF MERCHANTABILITY OR FITNESS FOR A PARTICULAR PURPOSE, NONINFRINGEMENT OF ANY INTELLECTUAL PROPERTY RIGHTS, OR WARRANTIES AS TO QUALITY OR CORRESPONDENCE WITH PRIOR DESCRIPTION OR SAMPLE, AND THE BUYER ASSUMES ALL RISK AND LIABILITY WHATSOEVER RESULTING FROM THE USE OF SUCH PRODUCT, WHETHER USED SINGLY OR IN COMBINATION WITH OTHER SUBSTANCES. No statements or recommendations made herein are to be construed as a representation about the suitability of any Product for the particular application of Buyer or user or as an inducement to infringe any patent or other intellectual property right. Data and results are based on controlled conditions and/or lab work. Buyer is responsible to determine the applicability of such information and recommendations and the suitability of any Product for its own particular purpose, and to ensure that its intended use of the Product does not infringe any intellectual property rights. The Product may be or become hazardous. Buyer should (i) obtain Material Safety Data Sheets and Technical Data Sheets from Huntsman containing detailed information on Product hazards and toxicity, together with proper shipping, handling and storage procedures for the Product, (ii) take all steps necessary to adequately inform, warn and familiarize its employees, agents, direct and indirect customers and contractors who may handle or be exposed to the Product of all hazards pertaining to and proper procedures for safe handling, use, storage, transportation and disposal of and exposure to the Product and (iii) comply with and ensure that its employees, agents, direct and indirect customers and contractors who may handle or be exposed to the Product comply with all safety information contained in the applicable Material Safety Data Sheets, Technical Data Sheets or other instructions provided by Huntsman and all applicable laws, regulations and standards relating to the handling, use, storage, distribution and disposal of and exposure to the Product. Please note that products may differ from country to country. If you have any queries, kindly contact your local Huntsman representative.

© 2015 Huntsman Corporation. All rights reserved.