



LANASOL® Black NSC Dye

Unravel the mystery of black

HUNTSMAN

Enriching lives through innovation

Headquarters

Huntsman (Singapore) Pte Ltd
Textile Effects Division
152 Beach Road
#29-00 Gateway East
Singapore 189721
Telephone +65 6297 3363
Fax +65 6298 0037
pr@huntsman.com

Europe Region

Huntsman Advanced Materials
(Switzerland) GmbH, Textile Effects
Klybeckstrasse 200
4057 Basel, Switzerland
Telephone +41 61 299 11 11
Fax +41 61 299 11 12
pr@huntsman.com

Americas Region

Huntsman International LLC
Textile Effects
3400 Westinghouse Blvd,
Charlotte, NC 28273, USA
Telephone +1 704-587-5000
Fax +1 704-587-5020
pr@huntsman.com

Asia Region

Huntsman Textile Effects
(China) Co. Ltd.
Flying Geese Mountain Industrial Park
Shilou Town, Panyu District, Guangzhou
511447, PR China
Telephone +86 20 3937 7000
Fax +86 20 8484 5222
pr@huntsman.com

Edition 2016

© Copyright 2017, Huntsman Corporation. All rights reserved.
LANASOL® is a registered trademark of Huntsman Corporation or an affiliate thereof in one or more, but not all, countries.

Chemical products carrying the bluesign® approved label meet the strict ecological and toxicological requirements of the bluesign® criteria. Properly applied they allow the production of bluesign® approved textiles and accessories with a minimum impact on people and the environment.

For more information visit www.bluesign.com

IMPORTANT: The following supersedes Buyer's documents. Sales of the product described herein ("Product") are subject to the general terms and conditions of sale of either Huntsman Advanced Materials LLC, or its appropriate affiliate. Huntsman warrants that at the time and place of delivery all Products sold to Buyer shall conform to the specifications provided to Buyer by Huntsman.

While the information and recommendations included in this publication are, to the best of Huntsman's knowledge, accurate as of the date of publication, NOTHING CONTAINED HEREIN (EXCEPT AS SET FORTH ABOVE REGARDING CONFORMANCE WITH SPECIFICATIONS PROVIDED TO BUYER BY HUNTSMAN) IS TO BE CONSTRUED AS A REPRESENTATION OR WARRANTY OF ANY KIND, EXPRESS OR IMPLIED, INCLUDING BUT NOT LIMITED TO ANY WARRANTY OF MERCHANTABILITY OR FITNESS FOR A PARTICULAR PURPOSE, NONINFRINGEMENT OF ANY INTELLECTUAL PROPERTY RIGHTS, OR WARRANTIES AS TO QUALITY OR CORRESPONDENCE WITH PRIOR DESCRIPTION OR SAMPLE, AND THE BUYER ASSUMES ALL RISK AND LIABILITY WHATSOEVER RESULTING FROM THE USE OF SUCH PRODUCT, WHETHER USED SINGLY OR IN COMBINATION WITH OTHER SUBSTANCES.

No statements or recommendations made herein are to be construed as a representation about the suitability of any Product for the particular application of Buyer or user or as an inducement to infringe any patent or other intellectual property right. Buyer is responsible to determine the applicability of such information and recommendations and the suitability of any Product for its own particular purpose, and to ensure that its intended use of the Product does not infringe any intellectual property rights. The Product may be or become hazardous. The Buyer should obtain Material Safety Data Sheets and Technical Data Sheets from Huntsman containing detailed information on Product hazards and toxicity, together with proper shipping, handling and storage procedures for the Product, and should comply with all applicable governmental laws, regulations and standards relating to the handling, use, storage, distribution and disposal of, and exposure to the Product. Buyer shall also take all steps necessary to adequately inform, warn and familiarize its employees, agents, direct and indirect customers and contractors who may handle or be exposed to the Product of all hazards pertaining to and proper procedures for safe handling, use, storage, transportation and disposal of and exposure to the Product, and the containers or equipment in which the Product may be handled, shipped or stored.

Please note that products may differ from country to country. If you have any queries, kindly contact your local Huntsman representative.

Huntsman is a member of:



Learn more about
LANASOL® Black NSC

← Scan QR Code



www.huntsman.com/textile_effects

XXXXXXXXX- May 2016, Printed in China.

HUNTSMAN

Enriching lives through innovation

Textile Effects

LANASOL® Black NSC Dye

No shade change in fabric finishing



Sustainability
Innovation
Collaboration

LANASOL® Black NSC Dye

Experience the highest fastness levels, color strength with No Shade Change. LANASOL® Black NSC dye provides the same high performance like chrome black in finishing / decatizing which helps to avoid expensive reprocessing and its new granular formulation makes for easy handling and exact measurement in the color kitchen. This most improved, economic and easy to use reactive dye is the perfect replacement for chrome black for wool.

Dyeing Process

High flexibility to match all type of typical black shades on wool by shading with other LANASOL® CE dyes and LANASOL® Deep Black CE-R dye.

The granular formulation shows very low dusting, for easy and exact manual weighing, also ideal for automated dosing systems. Same fastness level as chrome dyes and economic product with very high color strength.

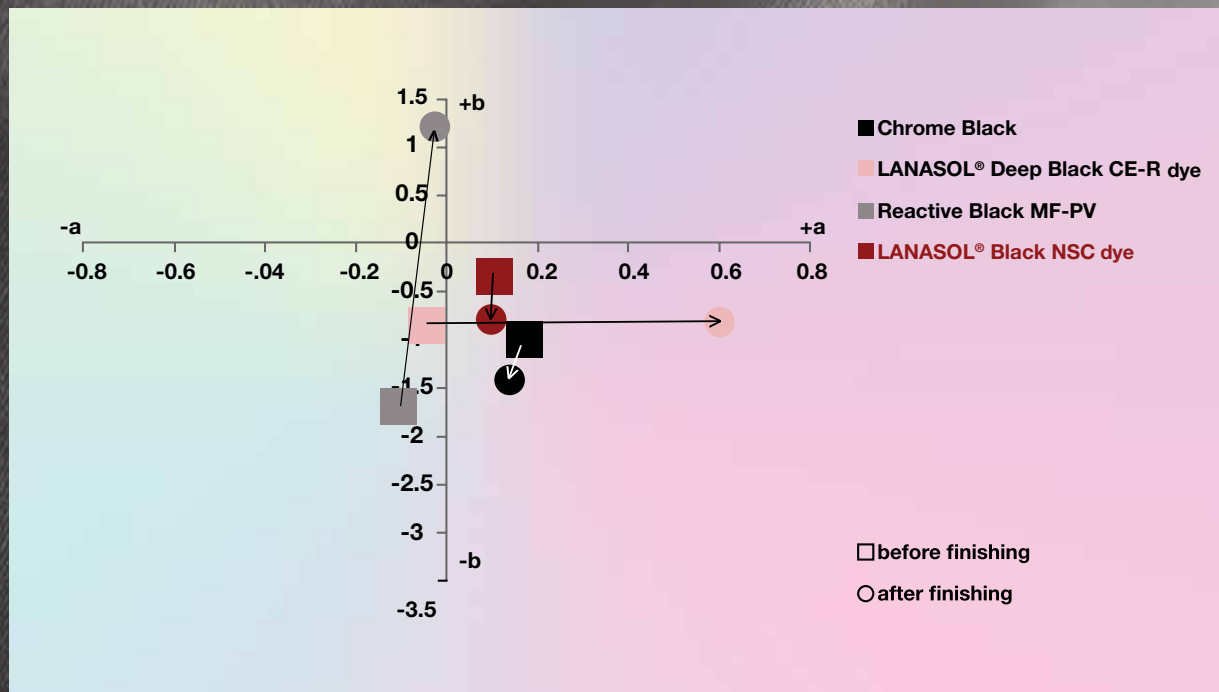
Decatizing Process

- Decatizing of wool fabrics (particularly pressure decatizing) exposes the fabrics to high temperature under humid conditions
- Under these conditions the final dimensional stability is achieved and the the final smooth and soft character of worsted wool fabrics is developed
- As a side effect the wool fibers release reductive substances which affect the shade of conventional wool reactive dyes
- LANASOL® Black NSC dye is a newly developed wool reactive Black, which is very stable under the typical decatizing conditions

Key Benefits

- Similar shade change in finishing like chrome dyes
- Economic product with very high color strength
- Most convenient LANASOL® Black dye to move away from chrome dyes
- Granular form for easy handling in the color kitchen
- Technical support by Huntsman experts for a smooth and trouble-free transition of recipe production

Shade change in wool finishing



- Chrome Black becomes slightly bluish.
- LANASOL® Deep Black CE-R dye moves to red.
- Reactive Black MF-PV becomes very yellowish.
- LANASOL® Black NSC dye behaves like Chrome Black

Results from a bulk trial with Ruyi



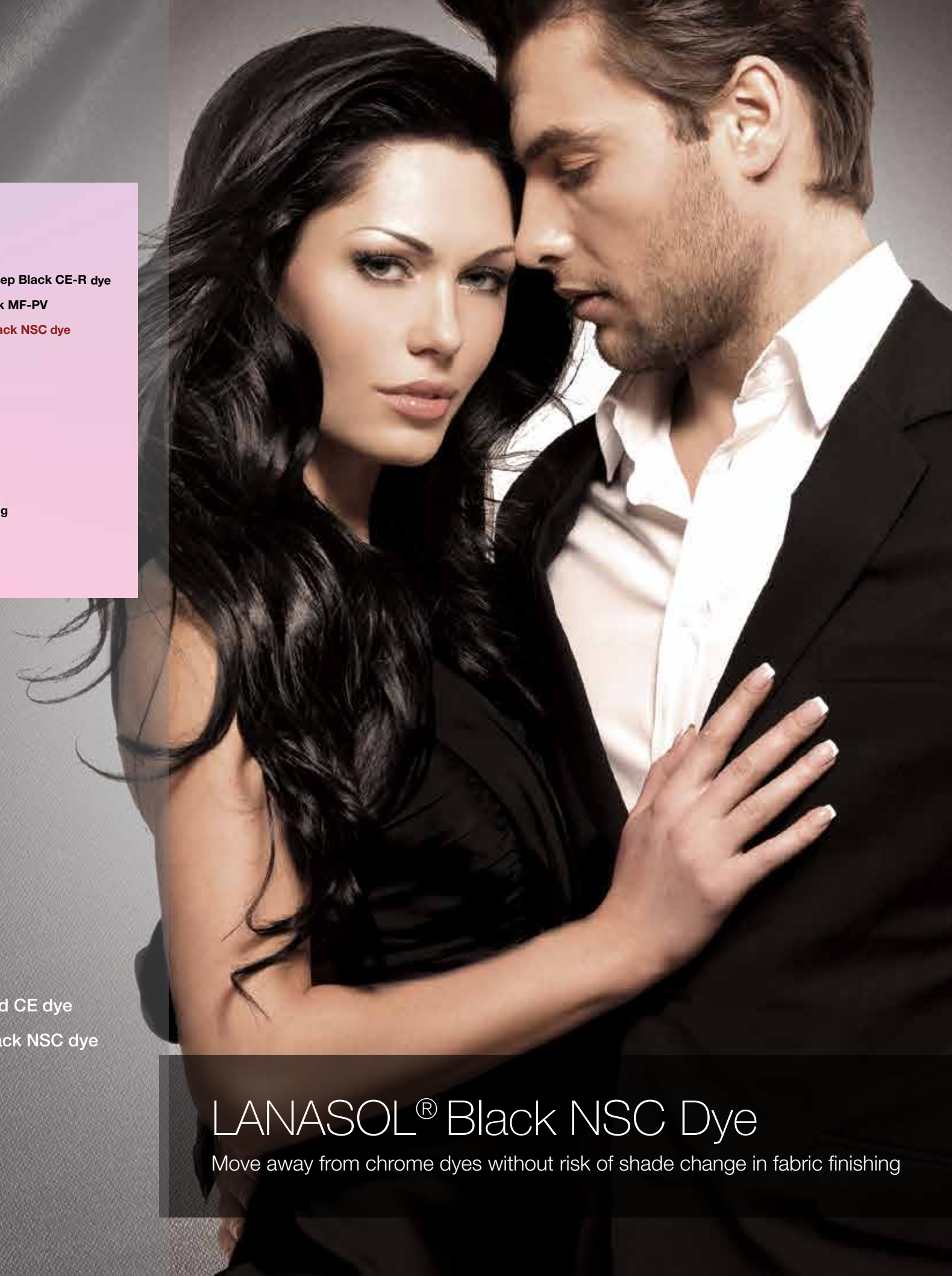
Shade after dyeing (before finishing)



Final shade after finishing

Dyeing Recipe:

- 0.66 % LANASOL® Red CE dye
- 5.00 % LANASOL® Black NSC dye



LANASOL® Black NSC Dye

Move away from chrome dyes without risk of shade change in fabric finishing